

Installation Guide

IMPORTANT SAFETY INFORMATION

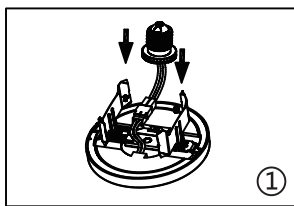
- WARNING : RISK OF SHOCK** House electric current can cause painful shock or serious injury unless handled properly. For your safety, always remember to :
 - A : Turn off the power supply at the fuse or circuit breaker box before you install the fixture.
 - B : Ground the fixture to avoid potential electric shocks and to ensure reliable starting.
 - C : Double-check all connections to be sure they are tight and correct.
 - D : Wear rubber soled shoes and work on a sturdy wooden ladder.
- This fixture is designed for use in a circuit protected by a fuse or circuit breaker. It is also designed to be installed in accordance with local electrical codes. If you are unsure about your wiring, consult a qualified electrician or local electrical inspector, and check your local electrical code.
- WARNING : RISK OF CUTS** Some metal parts in the fixture may have sharp edges. To prevent cuts and scrapes, wear gloves when handling the parts.
- Account for small parts and destroy packing material, as these may be hazardous to children.

Product Specification

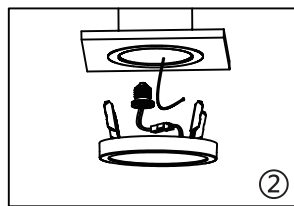
Size	Wattage (W)	Voltage (V)	Rated Input Frequency (Hz)	Dimension (DxH)
5 in.	8W	AC120V	60Hz	135x13mm
7 in.	12W			180x13mm
9 in.	18W			225x13mm
12 in.	24W			300x13mm

Embedded in installation

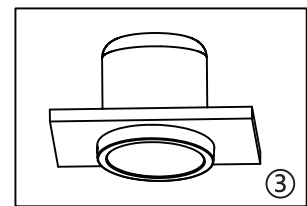
5 " Can



①

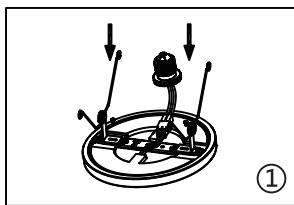


②

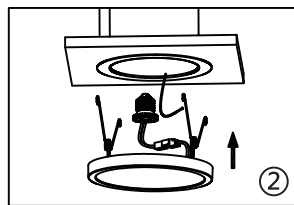


③

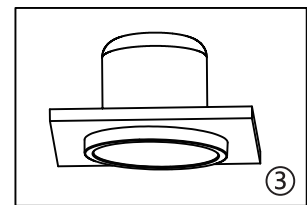
7/9/12 " Can



①



②



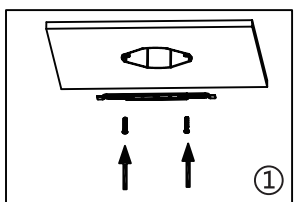
③

① Remove trim and existing lamp from recessed fixture;

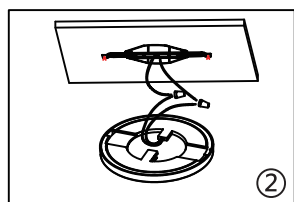
② Screw E26 socket adapter into socket in the housing;

③ Press the friction blade to insert the lamp into the housing and restore power.

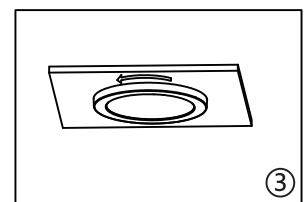
Surface mounting installation



①



②



③

① Fixing bracket on terminal box;

② Connecting the wire;

③ Push the light to the mounting bracket and rotate in the direction of the arrow .

Caution

- WARNING : Risk of fire.** Use AC120 50/60Hz circuits.
- Suitable for damp locations. Before installing your lighting fixture, thoroughly review enclosed installation manual. If you do not have sufficient electrical wiring experience, please refer to a do-it-yourself wiring handbook or have your fixture installed by a qualified licensed electrician. All electrical connections must be in accordance with local and National Electrical Code(NEC) standards. Reliable operating temperature is -20 to +40 degrees Celsius(-4 to +104 degrees Fahrenheit).
- Pls obey fire prevention regulations, do not cover the fixture with any heat insulated materials.
- Do not change the LED light source or driver inside under any circumstance.

Warranty:
5 years warranty



This product is for indoor use only



For use with dimmers