



HURON

Architectural LED Luminaire

HURON G3

DUO Selectable Architectural Linear Fixture

LIFI

DUO Selectable LED Linear Fixture

DESCRIPTION

2', 4' & 8' LED Linear Fixture / 120-277Vac Input / Frosted Lens / 0-10V
Dimming (Dim To Off) / Power and CCT Selectable / Suspension, Recessed
Surface or Wall mount

APPLICATION

Used in commercial and retail applications. Ideal for use in
offices, conference rooms, hotels, etc.



* optional



PRODUCT FEATURES

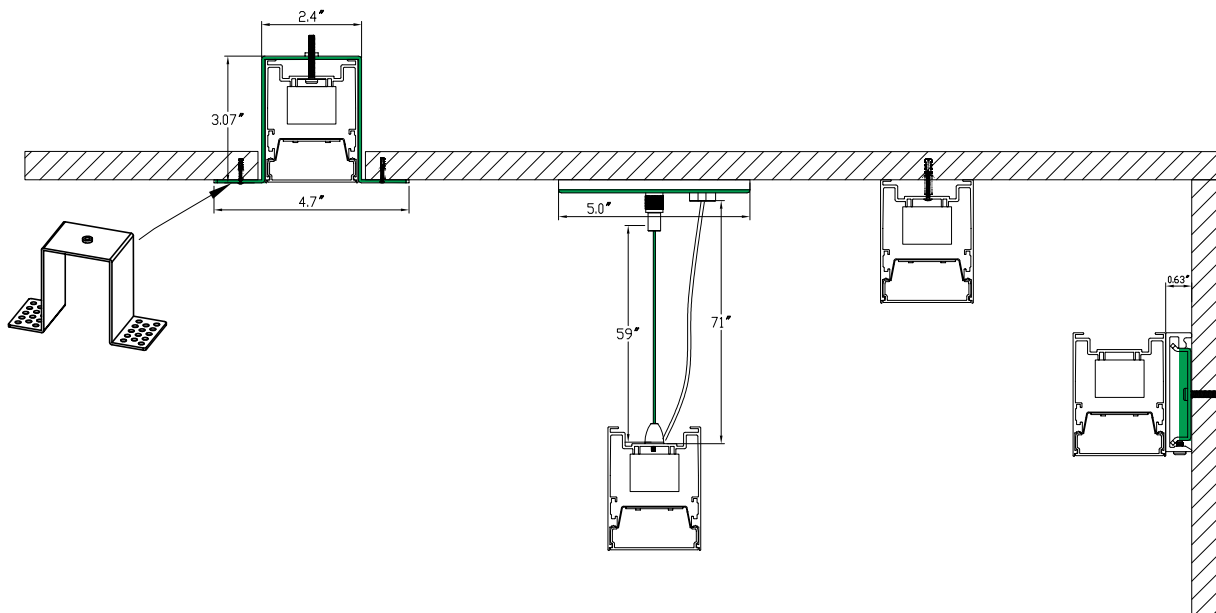
- Feature Power Selectable Technology: 3 step wattage adjustable
- Feature CCT Selectable Technology: Adjust CCT between 3500K/4000K/5000K
- Powered by 0-10V Dimming (dim to off) driver
- 12Vdc AUX output for extended wireless control
- UL Listed 1598: Suitable for damp locations
- Ambient Operating Temperature: -20°C (-4°F) ~ 40°C (104°F)
- Versatile mounting options: Suspension, Surface, Wall, Recessed
- Multiple connection parts for custom design: X Shape, T Shape, L Shape*
- Extruded acrylic diffuser features smooth sides
- Direct Light(100%) models come standard, Direct(70%)-Indirect(30%) models come optional
- Occupancy Sensor & EM Backup options available
- White finish comes default, custom paint available**
- L70>100,000 hours @25°C ambient fixture temperature
- DLC listed, BAA Compliant(Optional)***

* Linking parts are sold separately, extra lead time may apply

** Extra cost and lead time may apply

***4ft model is DLC listed, 8ft model is on demand.

INSTALLATION



LIFI
DUO Selectable LED Linear Fixture

MOUNTING OPTIONS

Suspension Mount

Available in Direct or Direct/Indirect, the Huron linear fixture is an excellent choice for general office illumination. The aircraft cable mounts slide along the length of the housing, allowing flexibility in the mounting point location.

Surface Mount

The surface mount is ideal for locations with low ceilings or where fire ratings prevent recessed luminaires. One of many options for applying the fixture on walls and ceilings to enhance architectural details or add to interior design elements.

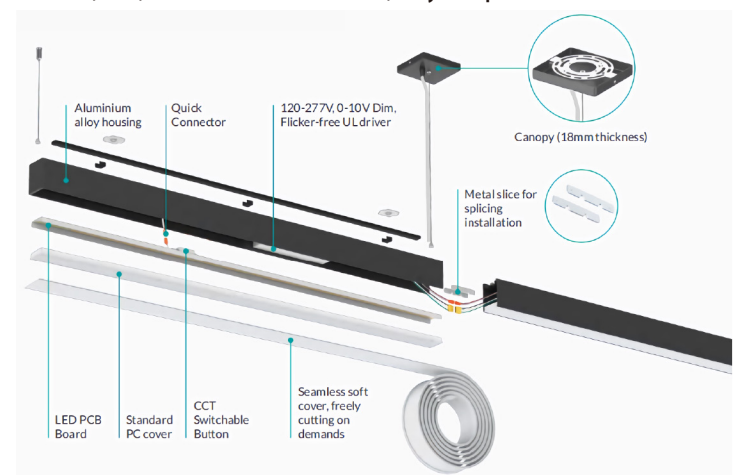
Wall Mount

Available in Direct or Direct/Indirect, The Huron linear fixture can be wall mounted to be used in areas such as corridors. The wall side bracket mounts to standard octagonal junction boxes and wiring can pass through the bracket into the luminaire.



MODULAR DESIGN

PC cover, PCB, and Driver are detachable, easy to replace and maintain.



ACCESSORIES



X Shape



T Shape



L Shape



LIFI

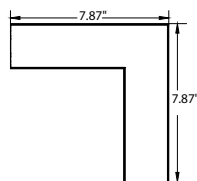
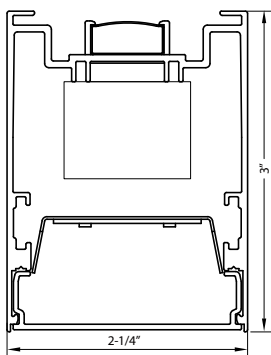
DUO Selectable LED Linear Fixture

PRODUCT SPECIFICATIONS

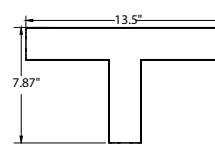
Model Number	Input Voltage	Nominal Wattage(W)	CRI	Wattage(W)	CCT(K)	Efficacy (LM/W)	Lumens (LM)
LIFI2-18W-T1-X-G3	120-277VAC	18	>80	18	3500K	98	1,764
				18	4000K	117	2,106
				18	5000K	107	1,926
		14		14	3500K	116	1,624
				14	4000K	126	1,764
				14	5000K	118	1,652
		11		11	3500K	116	1,276
				11	4000K	127	1,397
				11	5000K	123	1,353
LIFI4-36W-T1-X-G3	120-277VAC	36	>80	35.1	3500K	98.3	3,446
				33.8	4000K	116.5	3,934
				35.1	5000K	106.6	3,741
		29		28.8	3500K	116.2	3,351
				27.9	4000K	125.6	3,505
				29.5	5000K	118.1	3,485
		22		22.1	3500K	116.1	2,570
				21.5	4000K	126.7	2,729
				22.1	5000K	122.8	2,720
LIFI8-72W-T1-X-G3	120-277VAC	72	>80	72	3500K	98	7,056
				72	4000K	117	8,424
				72	5000K	107	7,704
		58		58	3500K	116	6,728
				58	4000K	126	7,308
				58	5000K	118	6,844
		43		43	3500K	116	4,988
				43	4000K	127	5,461
				43	5000K	123	5,289

* Data for 4ft is based on in-house ies files.
 * Data for 2ft and 8ft models is extrapolated.

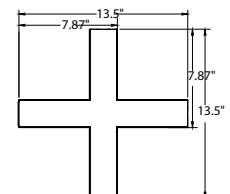
PHYSICAL SPECIFICATIONS



LKM-LIFI-T1-L



LKM-LIFI-T1-T



LKM-LIFI-T1-X

LIFI2-18W-T1-X-G3 24\"(602mm)

LIFI4-36W-T1-X-G3 48\"(1212mm)

LIFI8-72W-T1-X-G3 96\"(2412mm)

LIFI

DUO Selectable LED Linear Fixture

ACCESSORIES

LINKING PARTS

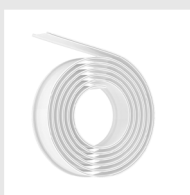
EASY CODE	MODEL NUMBER	DESCRIPTION
LCP	LKM-LIFI-T1-L	L shape connect, DUO Selectable, 10W, 120-277Vac, 0-10V Dimmable
XCP	LKM-LIFI-T1-X	X shape connect, DUO Selectable, 17W, 120-277Vac, 0-10V Dimmable
TCP	LKM-LIFI-T1-T	T shape connect, DUO Selectable, 13W, 120-277Vac, 0-10V Dimmable
LKC	LKC-LIFI-G3	Direct connect kit
SFC	SFC-LIFI-G3	Seamless flexible cover, comes in roll, cutting on demand



LKM-LIFI-T1-L



LKM-LIFI-T1-T



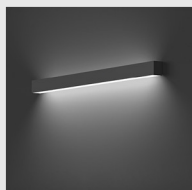
SFC-LIFI-G3

MOUNTING PARTS

EASY CODE	MODEL NUMBER	DESCRIPTION
RMK	RMK-LIFI-G3	Recessed Mount Kit for Huron, mounting clips & screws included
WMK	WMK-LIFI-G3	Wall Mount Kit, wiring caps & screws included
SKA	SSK-LIFI-G3A	Suspension Mount Kit, for 2FT and 4FT fixture, canopy & power cable included
SKB	SSK-LIFI-G3B	Suspension Mount Kit, for 8FT fixture, canopy & power cable included



SMK-LIFI-G3



WMK-LIFI-G3



SSK-LIFI-G3A/G3B

INDIRECT LIGHT STRIP

EASY CODE	MODEL NUMBER	DESCRIPTION
UP2	LUP-LIFI-7W-00*	Indirect light strip, 7W, 2FT, DUO selectable, 120-277Vac, 0-10V Dimmable
UP4	LUP-LIFI-14W-00*	Indirect light strip, 14W, 4FT, DUO selectable, 120-277Vac, 0-10V Dimmable
UP8	LUP-LIFI-28W-00*	Indirect light strip, 28W, 8FT, DUO selectable, 120-277Vac, 0-10V Dimmable



INDIRECT LIGHT STRIP

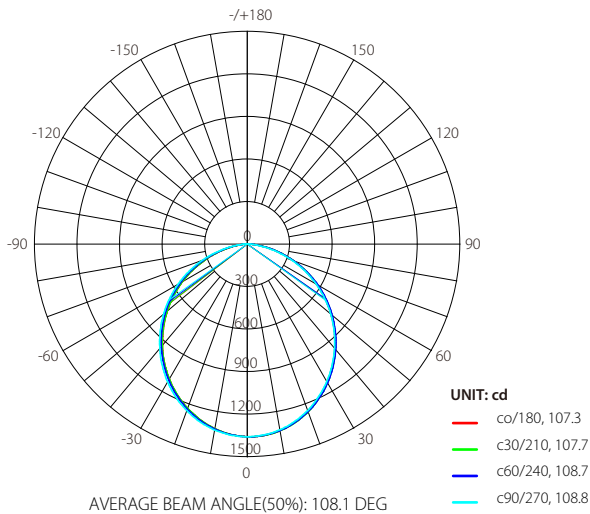
*Adding uplight strip won't affect the total wattage. Contact our sales team for more details.

LIFI

DUO Selectable LED Linear Fixture

PHOTOMETRIC SPECIFICATIONS

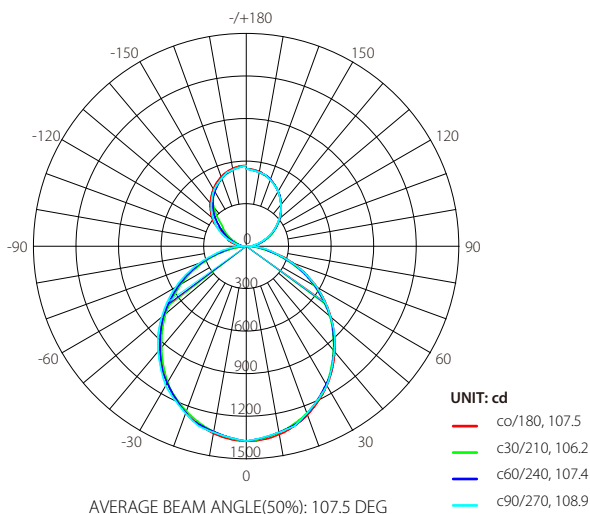
POLAR GRAPH – 4' DIRECT LIGHT 36W 4000K



ZONAL LUMEN SUMMARY

Zone	Lumens	% Luminaire
0-30	1,040.2	28.3%
0-40	1,690.6	46%
0-60	2,944.9	80.2%
60-90	728.0	19.8%
0-90	3,672.9	100%

Polar Graph – 4' Direct&Indirect Light 50W 4000K



ZONAL LUMEN SUMMARY

Zone	Lumens	% Luminaire
0-30	1,044.7	20.3%
0-40	1,697.2	33%
0-60	2,935.4	57%
60-90	736.9	14.3%
70-100	351.5	6.8%
90-120	310.8	6%
0-90	3,672.3	71.3%
90-180	1,477.8	28.7%
0-180	5,150.1	100%

LIFI

DUO Selectable LED Linear Fixture

EMERGENCY BACKUP

Factory-Installable

EASY CODE	MODEL NUMBER	DESCRIPTION
EC	EMB08YY-050	Emergency Kit, Input: 120-277VAC, Emergency Output: 8W, 25-50VDC, Emergency Time: 90 mins, Li-ion Battery



STAND ALONE FIXTURE CONTROL

Factory-Installable

EASY CODE	MODEL NUMBER	DESCRIPTION
SY	ANT-3C	Microwave Bi-Level Sensor, 12-24Vdc
RE	RC-100	Remote for ANT-3C



ANT-3C



RC-100

ORDERING INFORMATION

Series	Length	Wattage	Selectable	Finish	Control&EM Options	Generation	Compliance
LIFI							
	2= 2FT	18= 18W/14W/11W Selectable	T1= CCT&Wattage Selectable	Blank= White	Blank= w/o options(default)	G3	Blank= Standard
	4= 4FT	36= 36W/29W/22W Selectable			SY= ANT-3C		BAA= BAA Compliant
	8= 8FT	72= 72W/58W/43W Selectable			EC= EMB08YY-050		