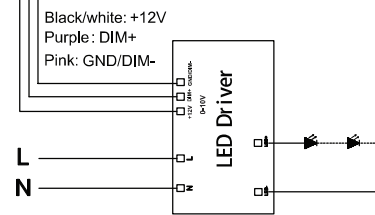
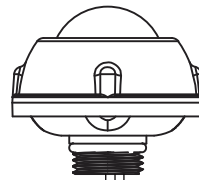


HB03DPR

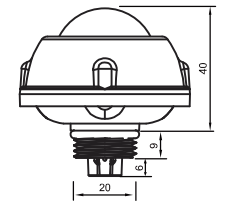
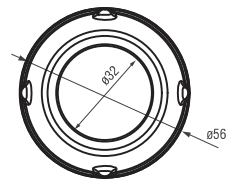
Dual PD, 12M highbay



HB03DPR-A



Wiring diagram



Unit:mm



On/off control



Stand-by dimming level



Detection area



Remote control setting



Hold time



12M Highbay altitude



Daylight sensor



5 years warranty



Stand-by period

01 Technical data

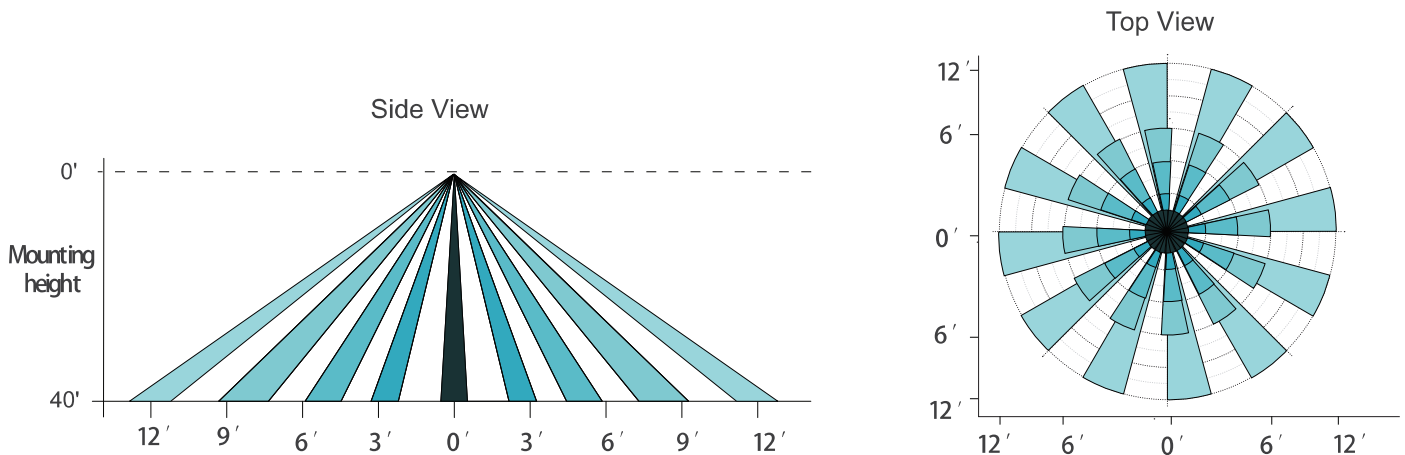
Operating voltage	12±2V DC
Operating current	30mA
Output	DIM 0-10V
Stand-by power	<0.5W
Brightness	0%-100%/Quick setting: 70%/80%/90%/100%
Hold time	10s/1min/10min/30min
Daylight threshold	10Lux/30Lux/50Lux/100Lux/Disable
Stand-by time	1min/30min/60min/+ ∞
Stand-by dimming level	10%/20%/30%/50%
Detection angle	≤ 120°(wall mounted),360°(Ceiling mounted)
Mounting height	≤ 12m/39.37ft(ceiling mounted)
Detection range	Radius,2-4m/6.58-13.12ft(ceiling mounted)
Operating temperature	-30°C~+60°C
IP rating	IP65 (Mounted on the light fixture)
Warm-up Period	50S

Note:

Default setting: Brightness:100%, Hold time:1min, Stand-by dimming level:20%, Stand-by time:1min, Sensitivity:100%(non-adjustable)
Daylight:Disable.

02 Detection coverage

This figure indicates the maximum distance at the highest mounting height with 100% sensitivity.

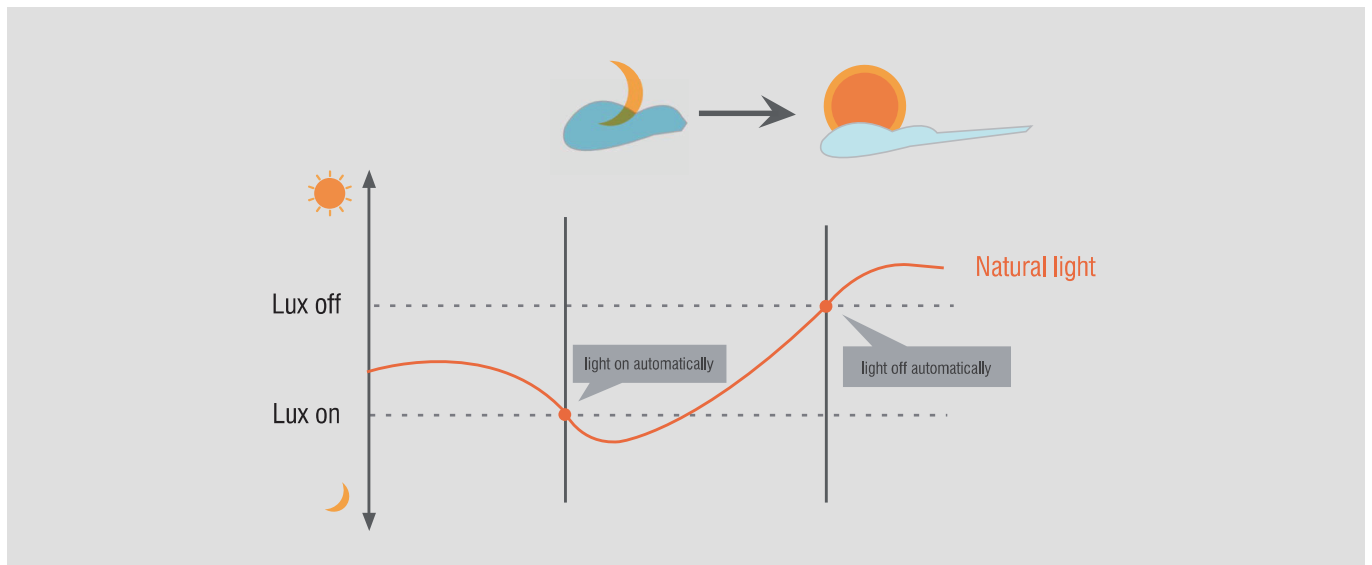


03 Lux on/off

Adopted dual PD technology, HB03DPR-A is able to differentiate artificial light brightness from natural light after installed inside the fixture, and automatically turn off light when ambient brightness exceeds preset lux level.

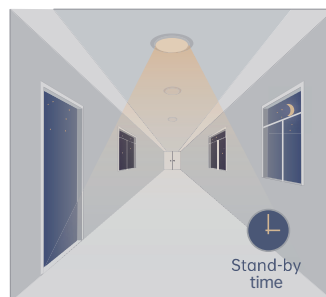
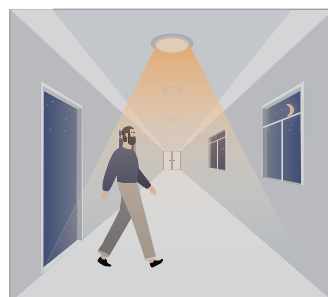
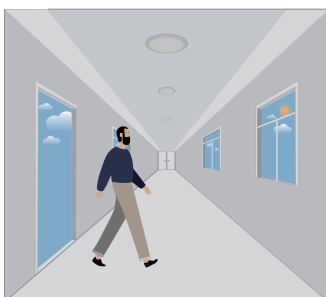
Preconditions to use the Lux-off function:

1. Stand-by time is $+\infty$;
2. Stand-by dimming level is on 10%, 20%, 30% or 50%;
3. Daylight threshold is on 10Lux, 30Lux, 50Lux or 100Lux. (About 20% error between actual and reference values).

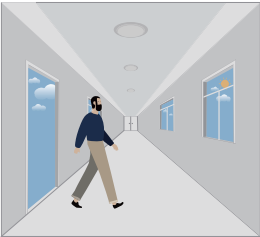


04 Performance

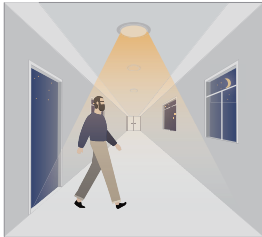
1. Automatically ON/OFF function



2. Corridor Function, Bi-level Dimmable



With sufficient daylight, the sensor keeps light OFF even motion gets detected, daylight function is on.



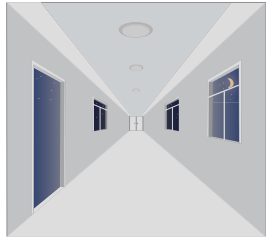
With insufficient daylight, the sensor turns light ON when motion gets detected.



After there's no motion detected, the sensor keeps light ON brightness setting for hold time.



After holdtime, sensor dims light to standby dimming level for standby time.

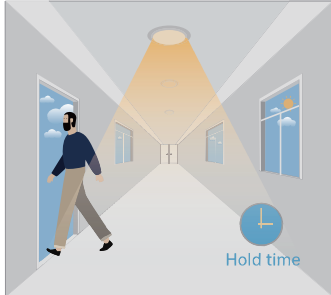


The sensor turns OFF light automatically after the standby time when there's no motion detected.

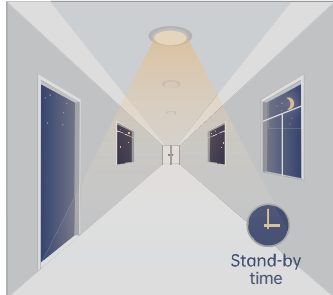
3. Daylight Disable



The sensor turns light ON when motion gets detected.



The sensor keeps light ON for hold time after motion leaves.



After holdtime, sensor dims light to standby dimming level for standby time.



The sensor turns OFF light automatically after the standby time when there's no motion detected.



Attention

1. Please read the instructions carefully before using this product and keep it well for all users to read at any time.
2. The sensor should be installed by qualified electrician and ensure power is off before the installation.
3. We reserve the right to modify any incorrect text, image and necessary technical parameters.
4. Any unauthorized modification is forbidden, otherwise all guarantees will be immediately invalid.

Installation precautions

1. Turn the power off at the circuit breaker before installing the sensor.
2. Do not allow bare wires to show.
3. Assemble any necessary mounting accessories.
4. Have the sensor's lens lower than edge of the fixture and keep the sensor away from heating part.

Application Environment

1. Do not mount it outdoor, in case the outdoor temperature disturbs it.
2. Do not have it at places with suddenly changed temperature or airflow.
3. Do not have shelves between sensor to the presence area.