



# ATLAS VPM

LED VAPORTIGHT GASKETED FIXTURE



# ATLAS

## VPM

LED VAPORTIGHT GASKETED FIXTURE



### DESCRIPTION

LED Vaportight Fixture | 4' and 8' |  
 120-277V Input (347-480V Optional) | Matte Lens |  
 0-10V Dimming | Surface, Suspension



### PRODUCT FEATURES

- Features Color Select Technology: Adjust CCT between 3500K/4000K/5000K
- Features Power Select Technology: Adjust power between 3 selections
- Ambient operating temperature: -40°C(-40°F) to 50°C(122°F)
- 0-10V dimming, with 12VDC auxiliary port for controls
- PF>0.95, THD<20%
- DLC Premium qualified
- Industry leading 10 year warranty for main components
- IP66
- NSF available
- Cord and plug available, order separately
- Surface mount comes standard
- Sensor available, order separately
- Emergency backup battery available, order separately
- Calculated L70 > 156,000 hrs
- Calculated L70 > 71,000 hrs

### APPLICATION

Commercial, Food Processing, Industrial & Manufacturing Facilities, Dusty Areas

### PRODUCT SPECIFICATIONS

Model Number	3500K			4000K			5000K			BUG
	Wattage	Efficacy	Lumen	Wattage	Efficacy	Lumen	Wattage	Efficacy	Lumen	
VPM-4FT-50P-T1	30	139.7	4,191	30	145.9	4,378	30	141.9	4,258	B2-U3-G2
	40	136.7	5,467	40	142.9	5,715	40	138.9	5,554	
	50	132.6	6,684	50	138.7	6,991	50	134.6	6,784	
VPM-8FT-90P-T1	70	139.7	9,779	70	145.9	10,213	70	141.9	9,933	B3-U3-G3
	80	136.7	10,936	80	142.9	11,432	80	138.9	11,112	
	90	132.6	11,934	90	138.7	12,483	90	134.6	12,114	

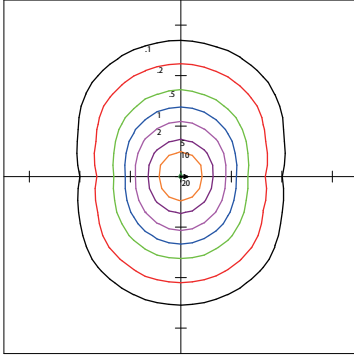
\* Data for 4FT model is based on in-house IES files. Data for 8FT model is extrapolated.

\* Fixtures are DLC listed under "Stairwell and Passageway Luminaires".

**VPM**  
LED VAPORTIGHT GASKETED FIXTURE

**PHOTOMETRIC SPECIFICATIONS**

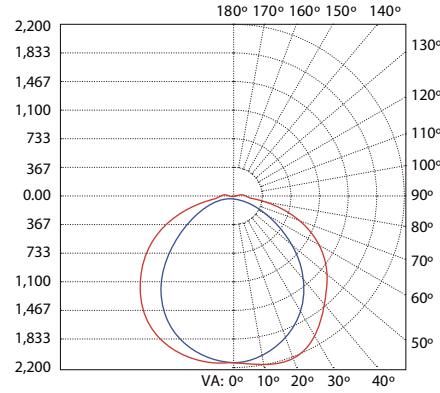
ISOCANDELA PLOT



ATG LED LIGHTING  
VPM-4FT-50P-T1 @50W/ 4000K

Horizontal Footcandles  
Scale: 1 Inch = 15 Ft.  
Light Loss Factor = 1.00  
Lumens Per Lamp = N.A. (absolute photometry)  
Luminaire Lumens = 6991  
Mounting Height = 10.00 Ft  
Maximum Calculated Value = 20.72 Fc  
Arrangement: Single

POLAR CANDELA DISTRIBUTION

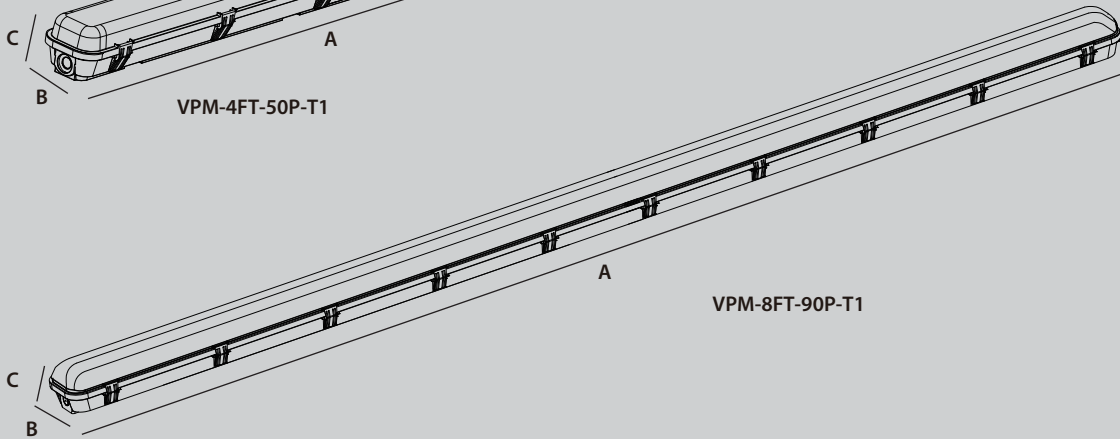
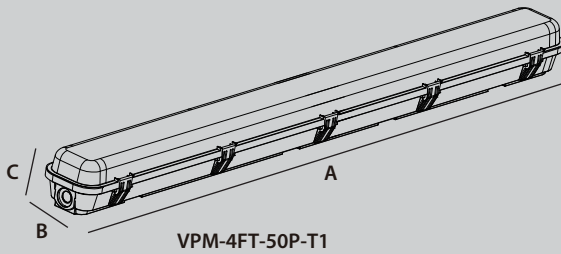


■ -0° H  
■ -90° H

ZONAL LUMEN SUMMARY

Zone	Lumens	% Luminaire
0-30	1,685.6	24.1%
0-40	2,788.9	39.9%
0-60	4,965.9	71%
60-90	1,644.7	23.5%
70-100	983.4	14.1%
90-120	325.3	4.7%
0-90	6,610.6	94.6%
90-180	380.1	5.4%
0-180	6,990.7	100%

**PHYSICAL SPECIFICATIONS**



Model Number	A (Length)	B (Width)	C (Height)	Carton Size	Gross Weight
VPM-4FT-50P-T1	49.6"	4.5"	3.7"	50"*4.9"*4.5"	10.7 lbs(4.9 kg)
VPM-8FT-90P-T1	101.6"	5.1"	3.7"	102.4"*7.9"*6.3"	19.8 lbs(9.1 kg)

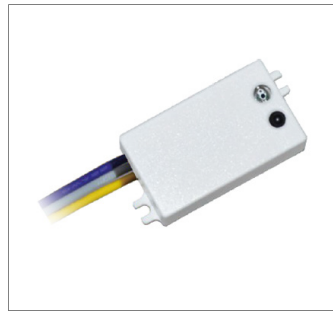
**VPM**  
LED VAPORTIGHT GASKETED FIXTURE

**ADDITIONAL ACCESSORIES (SOLD SEPARATELY)**

ATG CODE	MODEL NUMBER	DESCRIPTION
SH	ANT-9	Microwave Bi-level Sensor, 12VDC
R1	RC-100	Remote control for ANT-9
EC	EMB08YY-050	Emergency Kit, Input: 120-277VAC, Emergency Output: 8W, 25-50VDC
EG	STB41A-08WLi-55	Emergency Kit, Input: 120-277VAC, Emergency Output: 8W,20-50VDC



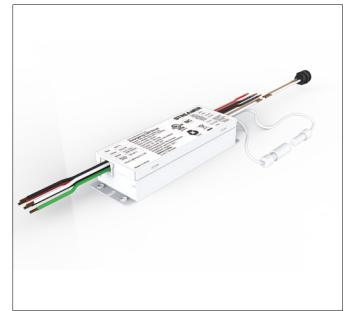
EMB08YY-050



ANT-9



RC-100



STB41A-08WLi-55

**ORDER FORMAT**

Series	Length	Wattage	CCT	Voltage	Photocell	EM
VPM						
VPM	4FT=4FT	50P= 50W/40W/30W Selectable	T1= 3500K/4000K/ 5000K Selectable	Blank= 100-277VAC	SH= ANT-9A	EG= YH36-09WL-50
	8FT=8FT	90P= 90W/80W/70W Selectable		V= 347-480VAC		

**QUICK ORDERING GUIDE**

✓	Part Number	Description	QUICK SHIPPING*
	VPM-4FT-50P-T1	DUO LED Vapor Proof Fixture, 1-10V Dimming, 4FT, 50W/40W/30W, 3500K/4000K/5000K, 120-277VAC, with 12V AUX	✓
	VPM-8FT-100P-T1	DUO LED Vapor Proof Fixture, 1-10V Dimming, 8FT, 100W/80W/60W, 3500K/4000K/5000K, 120-277VAC, with 12V AUX	
	ANT-9	Microwave Bi-level Sensor for DUO LNS, DUO SCP and DUO VP, 12VDC	✓
	EMB08YY-050	Emergency Kit, Input: 120-277VAC, Emergency Output: 8W,25-50VDC <b>*CLEARANCE*</b>	✓
	STB41A-08WLi-55	Emergency Kit, Input: 120-277VAC, Emergency Output: 8W,20-50VDC	✓