



LNS G2

Power&CCT Selectable Linear Strip

LNS G2

Power&CCT Selectable Linear Strip



DESCRIPTION

LED LINEAR STRIP / 2ft, 4ft & 8ft / Power & CCT Selectable
/ 120-277V / 0-10V Dimming



PRODUCT FEATURES

- Powered by 0-10V dimming driver (dim to off)
- 12Vdc AUX output for extended wireless control
- Ambient operating temperature: -20°C(-4°F) to 50°C(122°F)
- PF>0.95, THD<20%
- Snap-lock design, easy for installation and maintenance
- Stand Alone Fixture Control (SAFC) options available
- BLE Mesh Control (LLLC) and Circuit Level Control (LALC) options available
- BAA Copmliant (Optional)
- Feature Power Selectable Technology: 3 step power adjustable
- Feature CCT Selectable Technology: Adjust CCT between 3500K/4000K/5000K
- L70>100,000 Hrs,5 Year Limited Warranty

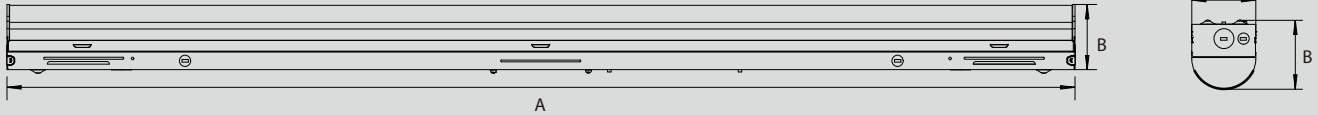
PRODUCT SPECIFICATIONS

Model Number	Nominal Wattage(W)	3500K			4000K			5000K		
		Wattage (W)	Efficacy (LM/W)	Lumens (LM))	Wattage (W)	Efficacy (LM/W)	Lumens (LM)	Wattage (W)	Efficacy (LM/W)	Lumens (LM)
LNS-2FT-15-T1-F-G2	15	15.4	142.6	2,196	15.4	149.8	2,307	15.4	146.9	2,262
	20	20.5	138.4	2,838	20.5	145.4	2,981	20.5	142.6	2,923
	25	26.0	134.4	3,492	26.0	141.2	3,671	26.0	138.4	3,598
LNS-4FT-25-T1-F-G2	25	25.3	141.4	3,575	24.5	154.9	3,789	25.3	144.4	3,659
	30	30.7	137.2	4,216	29.4	152.6	4,491	30.8	140.0	4,316
LNS-4FT-55-T1-F-G2	40	42.9	128.4	5,509	40.5	146.3	5,931	42.9	130.7	5,606
	55	55.6	138.5	7,703	55.6	151.8	8,440	55.6	141.5	7,866
	60	61.5	134.5	8,271	61.5	149.6	9,198	61.5	137.2	8,437
LNS-8FT-55-T1-F-G2	65	66.5	125.9	8,369	66.5	143.4	9,534	66.5	128.1	8,518
	55	55.6	141.4	7,860	55.6	154.9	8,612	55.6	144.4	8,027
	60	61.5	137.2	8,440	61.5	152.6	9,386	61.5	140.0	8,609
LNS-8FT-65-T1-F-G2	65	66.5	128.4	8,540	66.5	146.3	9,729	66.5	130.7	8,692
	65	65.2	141.4	9,217	65.2	154.9	10,099	65.2	144.4	9,413
	75	75.1	137.2	10,306	75.1	152.6	11,461	75.1	140.0	10,513
	90	89.4	128.4	11,481	89.4	146.3	13,079	89.4	130.7	11,685

* 4FT data is based on in-house IES files, 8FT data is extrapolated.

LNS G2
Power&CCT Selectable Linear Strip

PHYSICAL SPECIFICATIONS



PACKAGING

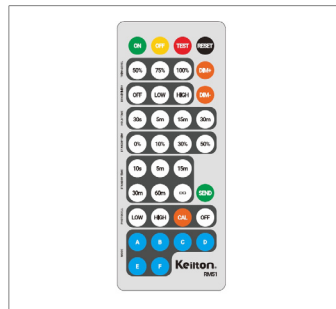
MODEL	A(Length)	B(Height)	C(Width)	Weight(Lbs)
LNS-2FT	22.2"	2.5"	2.8"	2.65
LNS-4FT	47.3"	3.1"	2.8"	4.41
LNS-8FT	94.2"	3.1"	2.8"	8.49

MOTION SENSOR(SOLD SEPARATELY)

ATG CODE	MODEL NUMBER	DESCRIPTION
SW	IFS08-ET	Microwave Motion Sensor, 12VDC, with Daylight function
RI	RM-51	Remote for IFS06R&IFS08-ET



IFS08-ET



RM-51

LNS G2

Power&CCT Selectable Linear Strip

EMERGENCY BACKUP UNIT(SOLD SEPARATELY)

ATG CODE	MODEL NUMBER	DESCRIPTION
EC	EMB08YY-050	EM Kit, 120-277VAC, 8W, 25-50VDC, 90mins
E1	EM-0825-010/105-P28	EM Kit, 120-277VAC, 8W, 11-56VDC, 90mins



EMB08YY-050



EM-0825-010/105-P28

EMERGENCY BACKUP UNIT(SOLD SEPARATELY)

ATG CODE	MODEL NUMBER	DESCRIPTION
W5	PSC-BL-I-FM-110-BLE-SR	Bi-Level Dimming PIR Sensor, 120-277VAC Input
W7	PSC-DM-WS-100-BLE-SR	Wireless Dimmer Switch, 120-277VAC Input
W8	PSC-DM-I-WS-100-BLE-SR	Wireless Dimming Occupancy Switch
W9	PSC-WCM-50-DC0-BLE-SR	12V Wireless Fixture Controller
PP2	PSC-AC-PP-250	Dimming Power Pack, 20A Relay, 120-277VAC Input, 12VDC Output
PP5	PSC-WCM-450-BLE-SR	Room Controller, KO Mount, 120-277VAC Input, 12VDC Output



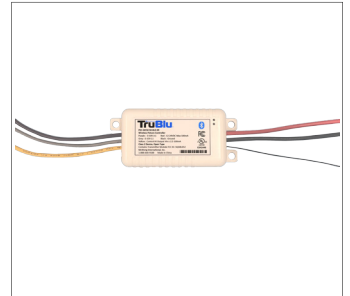
PSC-BL-I-FM-110-BLE-SR



PSC-DM-WS-100-BLE-SR



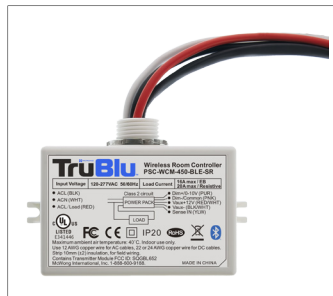
PSC-DM-I-WS-100-BLE-SR



PSC-WCM-50-DC0-BLE-SR



PSC-AC-PP-250



PSC-WCM-450-BLE-SR

LNS G2
Power&CCT Selectable Linear Strip

ADDITIONAL ACCESSORIES(SOLD SEPARATELY)

ATG CODE	MODEL NUMBER	DESCRIPTION
VH	VH-LNS-01	V-hook for Linear Strip
CK	CK-WRP-3M	Suspension Cable Kit
LK	LKC-LNS-EE-G2	Electrical Connector Kit



LKC-LNS-EE-G2



VH-LNS-01

ORDER FORMAT

Series	Length	Wattage	CCT	Lens	Gen	Sensor*	BLE*	EM*	Accessories
LNS	2FT=2FT 4FT=4FT 8FT=8FT	15=15W/20W/25W Selectable 25=25W/30W/40W Selectable 55=55W/60W/65W Selectable 65=65W/75W/90W Selectable	T1=DUO Selectable CCT Range:3500K/4000K/5000K	F=Frosted	G2	SW RI	W5 W7 W8 W9 PP2 PP5	EC E1	LK VH CK

* See more details in ACCESSORIES sheet.

★ Contact sales team for more details about Bluetooth Mesh Control.

LNS G2
Power&CCT Selectable Linear Strip

✓	Part Number	Description	QUICK SHIPPING*
	LNS-2FT-15-T1-F-G2	G2 DUO LED Linear Strip, 1-10V dimming, 2ft, 25W/20W/15W, 3500K/4000K/5000K, 100-277 VAC, Frosted PC Lens with 12VDC AUX	
	LNS-4FT-25-T1-F-G2	G2 DUO LED Linear Strip, 1-10V dimming, 4ft, 40W/30W/25W, 3500K/4000K/5000K, 100-277 VAC, Frosted PC Lens with 12VDC AUX	✓
	LNS-4FT-55-T1-F-G2	G2 DUO LED Linear Strip, 1-10V dimming, 4ft, 65W/60W/55W, 3500K/4000K/5000K, 100-277 VAC, Frosted PC Lens with 12VDC AUX	
	LNS-8FT-55-T1-F-G2	G2 DUO LED Linear Strip, 1-10V dimming, 8ft, 65W/60W/55W, 3500K/4000K/5000K, 100-277 VAC, Frosted PC Lens with 12VDC AUX	✓
	LNS-8FT-65-T1-F-G2	G2 DUO LED Linear Strip, 1-10V dimming, 8ft, 65W/75W/90W, 3500K/4000K/5000K, 100-277 VAC, Frosted PC Lens with 12VDC AUX	
	VH-LNS-01	V-hook for Linear Strip	✓
	CK-WRP-3M	Aircraft Cable Kit for LED Wrap Light & Linear Strip, 3 meters	✓
	IFS08-ET	Microwave Motion Sensor for G2 DUO LED Linear Strip, 12VDC	✓
	EMB08YY-050	Emergency Kit, Input: 120-277VAC, Emergency Output: 8W, 25-50VDC, Emergency Time: 90 mins, Li-ion Battery	✓

* QUICK SHIPPING means this is a inventory product, please contact our sales for realtime stock information.