

■ PIR Occupancy Bi-level&Daylight Harvesting Sensor ANT-1P-4T Instruction



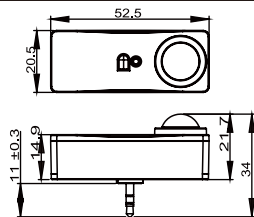
ANT-1P-4T (sensor)



ANT-1P-4T (connecting base)



RC-105



INTRODUCTION

The ANT-1P-4T is passive infrared occupancy bi-level sensor ,as a fixture sensor mounts in indoor light fixture and provides daylight harvest control. It works by 12-24Vdc power, and controls 0-10VDC LED drivers or dimming ballasts All controls parameters (Hold time, task light level, stand-by level, stand-by time) are adjustable via dip switch and task light level also works by remote control.

SPECIFICATIONS

| | |
|-----------------------|----------------------------------|
| Power supply | 12-24V DC, >50mA |
| Dim control output | 0-10V, max. 25mA sinking current |
| Mounting height | 4m Max. |
| Cable length | 100cm |
| Detection angle | 120° |
| Operating temperature | -20°C~70°C |
| IP rating | IP20 |

⚠ WARNING

NOTE: Warm up time is 40seconds. After the sensor connects input power first time, the light will keep on 40seconds, then go to dimming to work normally.

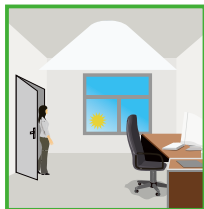
NOTE: Factory Default Setting: Task light level:100%, Occupied timeout: 5min, Timeout light level: 20%, Prolonged: 30minutes.

NOTE: Any setting changed by remote control, the led light that sensor connect will on/off as confirm.

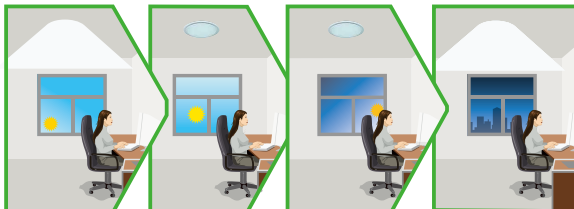
FUNCTION AND OPTIONS

The PIR Occupancy bi-level sensor to achieve daylight harvesting control, for some areas that require a light change notice before switch off.

If offers 3 levels of the light Control : Task Level (100%, 90%, 80%, 70%)--Stand-by light level (50%,20%)-off;and 2 periods of selectable waiting time: motion hold-time and stand-by time. Daylight harvest control works in hold-time.



The light will always switch ON automatically on detecting presence OR manually with power switch (even without detecting presence). When Day Light Harvesting is enabled, the light output regulates between Task and Stand By levels according to the level of natural light available.



The light turns on at full or dims to maintain the lux level. The light output regulates according to the level of natural light available.

■ PIR Occupancy Bi-level&Daylight Harvesting Sensor ANT-1P-4T Instruction

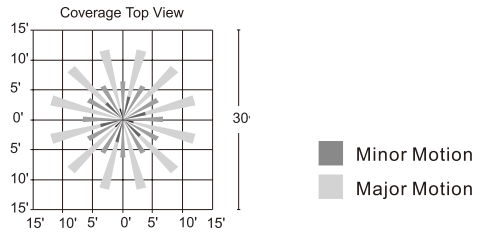
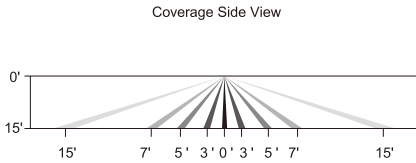


The light dims to "stand-by level" after hold time.



The light switches off completely after the stand-by period.

COVERAGE PATTERNS



DAYLIGHT HARVESTING FUNCTION SETTING BY REMOTE CONTROL RC-105.

| | | | | |
|--|--|---|--|---|
| | | Press the "Motion ON" button, the motion function is opened. | | Press the "Motion OFF" button, the motion function is disabled. The luminaire is unaffected whether or not a moving signal is detected. |
| | | One touch button, the default is | | Press the "REPEAT" button, copy the parameters set by the remote control last time. Can be repeated "adhesive" to different lamps, set the same parameters. |
| | | Press the "ON" button, The daylight harvesting is turned on. | | Press the "OFF" button, The daylight harvesting is turned off, that the light is not affected by ambient brightness, means daylight harvesting is disable. |
| | | Task light level, means set the indoor ambient brightness value. The light output regulates automatically according to the level of natural light available. | | Occupied timeout, the time that the sensor will turn off(if choose "LIGHT LEVEL" is 0%) or dim the light to a low level after the area is vacated |
| | | LIGHT LEVEL, to set the output level of connected lighting during vacancy. The sensor will regulate the lighting output at the set level. Setting the "0%" means light full off during vacancy. | | PROLONGED TIMEOUT, to represents the time that the sensor will keep the light at low dim level after the "OCCUPIED TIMEOUT" elapsed. |
| | | | | |