



The new ECO Flood Light is the environmentally preferred alternative to traditional metal halide lamps. It is the maintenance free and cost-effective solution to be widely used in illuminating facades, landscapes, parking areas, and apartment complexes.

Project Details		Type
Project:		
Product:		
Prepared by:		
Notes:		

Product Highlights
<ul style="list-style-type: none"> • Sleek Design • High pressure die-cast housing • 0-10V Dimming(10%-100%) • Compatible with photocells • Up to 144 LPW efficacy • Suitable for wet locations

Product Specs	
Input Voltage (VAC)	120-277/347-480* 50/60 Hz
Wattage	30, 50, 70, 100, 150, 240, 300
CCT (K)	3000K, 4000K, 5000K
Projected Lifetime	100,000 Hrs (L70)
Limited Warranty	5 Years [†]
CRI	70+
Finish Color	Bronze(RAL8019) Black(RAL9005) Customized*
Operating Temperature	-30°C ~ 50°C
IP Rating	IP65
IK Rating	IK08
Dimming Range	0-10V Dimming

[†]see website for warranty terms
^{*}347-480V is available for above 70W
^{*}Default finish is Bronze. Contact sales for lead time and extra cost on other finish colors.

Certifications and Compatibilities

Order Format

Series	Wattage	CCT	Voltage	Finish	Control options
ELF	30	30 = (3000K)	Blank = (120-277V)	Blank = (Bronze)	PH
	50	40 = (4000K)	V = (347-480V)*		SE
	70	50 = (5000K)			EM
	100				
	150				
	240				
	300				

*347-480V is available for above 70W

Factory Installed Options	
PH	JL-207C,3-Pin Photocell
SE	JL-403,Button Photocell
EM	JL-243,7-Pin Photocell

Mounting Accessories

Mounting Accessories & Glare Shield

KN	MKN-ELF-01,Knuckle Mount for ELF 30W/50W ELF Flood Light*Default*
SF	MSF-ELF-01,Slipfitter Mount for ELF 70W/100W/150W/240W/300W ELF Flood Light*Default*
UB1	MUB-ELF-01, U-Bracket for 30W ELF Flood Light
UB2	MUB-ELF-02, U-Bracket for 50W ELF Flood Light
UB3	MUB-ELF-03, U-Bracket for 70W/100W/150W ELF Flood Light
UB4	MUB-ELF-04, U-Bracket for 240W/300W ELF Flood Light
WM1	MWK-ELF-01,Wall Mount for 30W/50W ELF Flood Light
WM2	MWK-ELF-02,Wall Mount for 70W/100W/150W ELF Flood Light
SD1	SHD-ELF-01,Shield for 30W ELF Flood Light
SD2	SHD-ELF-02,Shield for 50W ELF Flood Light

Knuckle Slipfitter Wall Mount Kit Trunnion Shield



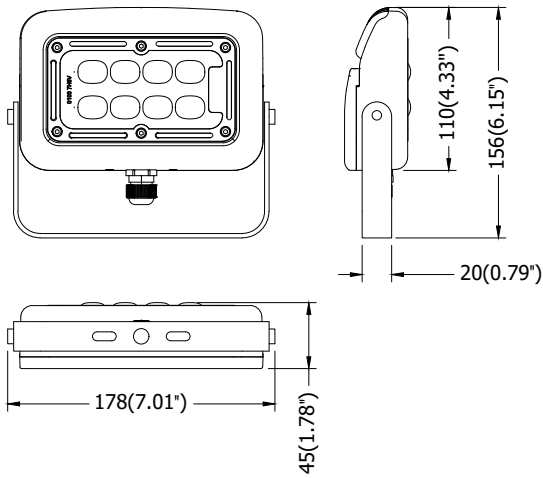
Performance Chart

Model Number	Voltage	PF	THD	B	U	g	Surge Protection Device (Driver Default, Optional Add On)
ELF-30-XX	120-277	0.9	<15%	2	2	1	—
ELF-50-XX	120-277	0.9	<15%	3	2	1	—
ELF-70-XX	120-277	0.9	<15%	3	2	2	—
ELF-100-XX	120-277 / 347-480	0.9	<15%	3	2	2	4KV(Driver)/10KV(Separate,Optional)
ELF-150-XX	120-277 / 347-480	0.9	<15%	4	3	3	6KV(Driver)/10KV(Separate,Optional)
ELF-240-XX	120-277 / 347-480	0.9	<15%	5	3	3	10KV(Driver)/10KV(Separate,Optional)
ELF-300-XX	120-277 / 347-480	0.9	<15%	5	3	3	10KV(Driver)/10KV(Separate,Optional)

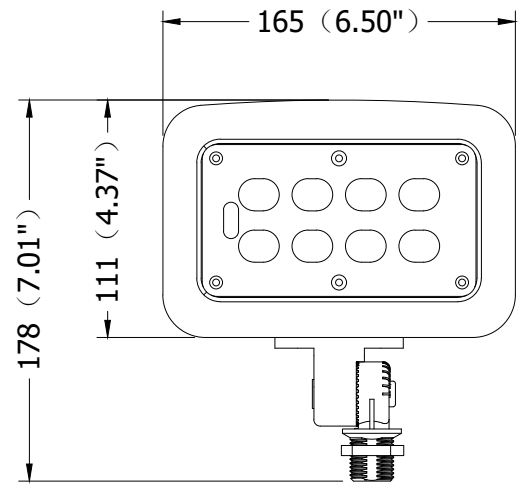
Model Number	Default Watts	CCT	RA	Optics	System Watts (W)	Efficacy (LM/W)	Lumens	Shipping
ELF-30-30	30	3000	70+	7H6V	29	132.5	3794	TBD
ELF-30-40		4000	70+	7H6V	29	132.0	3818	TBD
ELF-30-50		5000	70+	7H6V	29	132.5	3854	TBD
ELF-50-30	50	3000	70+	7H6V	54	132.7	7192	TBD
ELF-50-40		4000	70+	7H6V	54	133.7	7244	TBD
ELF-50-50		5000	70+	7H6V	54	134.7	7302	TBD
ELF-70-30	70	3000	70+	7H6V	72	140.7	10155	TBD
ELF-70-40		4000	70+	7H6V	72	141.7	7 10230	TBD
ELF-70-50		5000	70+	7H6V	72	143.7	10383	TBD
ELF-100-30	100	3000	70+	7H6V	101	137.8	13964	TBD
ELF-100-40		4000	70+	7H6V	101	138.8	14067	TBD
ELF-100-50		5000	70+	7H6V	101	139.9	14179	TBD
ELF-150-30	150	3000	70+	7H6V	153	135.1	20625	TBD
ELF-150-40		4000	70+	7H6V	153	136.0	20776	TBD
ELF-150-50		5000	70+	7H6V	153	137.1	20941	TBD
ELF-240-30	240	3000	70+	7H6V	249	139.2	34643	TBD
ELF-240-40		4000	70+	7H6V	249	140.2	34897	TBD
ELF-240-50		5000	70+	7H6V	249	141.3	35174	TBD
ELF-300-30	300	3000	70+	7H6V	310	134.6	41665	TBD
ELF-300-40		4000	70+	7H6V	310	135.5	41973	TBD
ELF-300-50		5000	70+	7H6V	310	136.6	42307	TBD

Dimensions

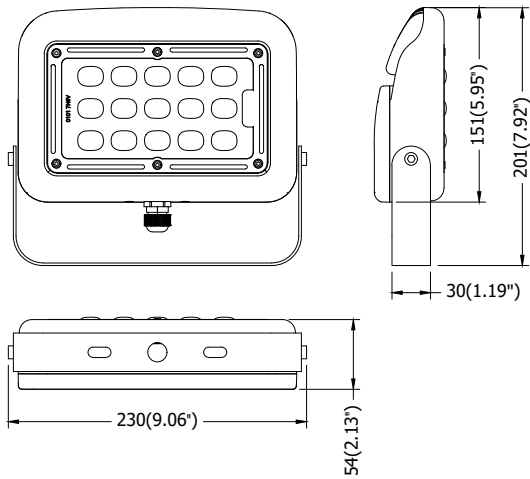
ELF-30W drawing with Trunnion



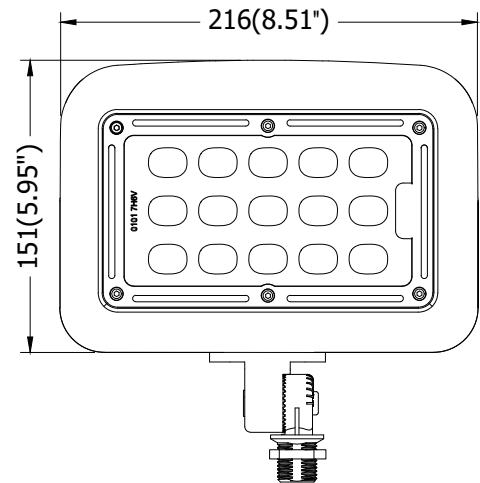
ELF-30W drawing with Knuckle Mount



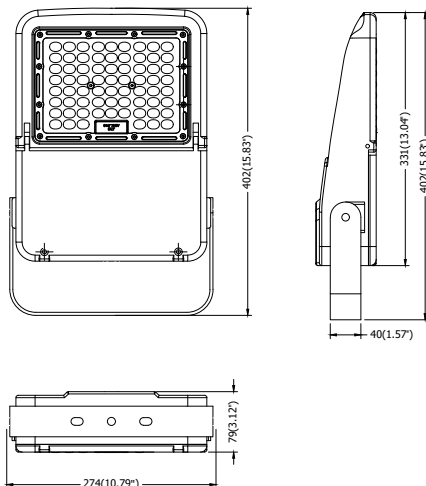
ELF-50W drawing with Trunnion



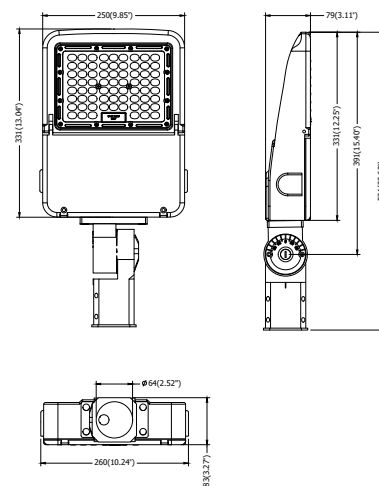
ELF-50W drawing with Knuckle mount



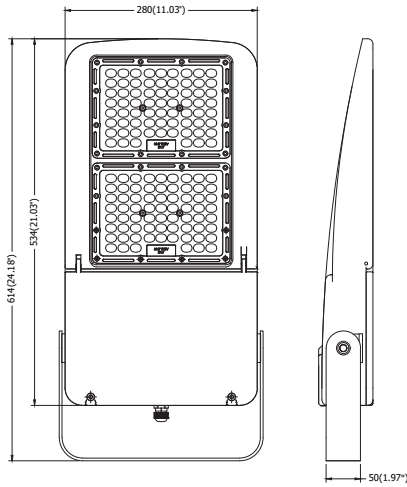
ELF-70W and 100W and 150W drawing with Trunnion



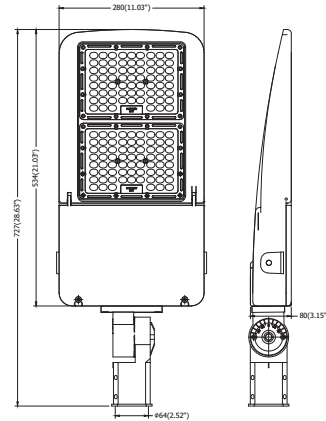
ELF-70W and 100W and 150W drawing with Slipfitter



ELF-240W and 300W drawing with Trunnion



ELF-240W and 300W drawing with Slipfitter



ZTGL-1100E(200-300尾座款尺寸图)

Electrical Accessories

JL-403C

Fix Mount Button Photocell



The JL-403C is an electronic photocell that fits in a standard outlet box, post lamp or light fixture.

FEATURES

- Rated Voltage 120-277V
- Rated Frequency 50/60 Hz
- Operate Level 10~20 lx On/30~80 lx Off
- Ambient Temperature -40°C~+70°C

[Download the PDF of the JL-403C here.](#)

JL-207

3-Pin Photocell



The JL-207 photocell series is applicable to control street lighting, garden lighting, passage lighting and doorway lighting automatically in accordance with the ambient natural lighting level.

FEATURES

- Rated Voltage 120-277V
- Rated Frequency 50/60 Hz
- Power Consumption 0.5W
- Typical On/Off Level 16 lx On/24 lx Off
- Ambient Temperature -40°C~+70°C

[Download the PDF of the JL-207 here.](#)

JL-243

7-Pin Photocell



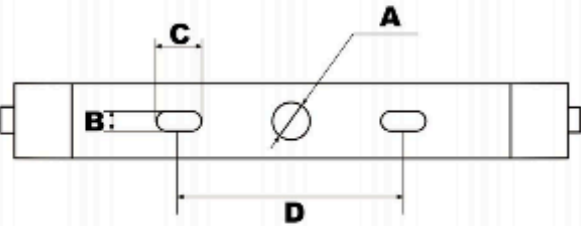
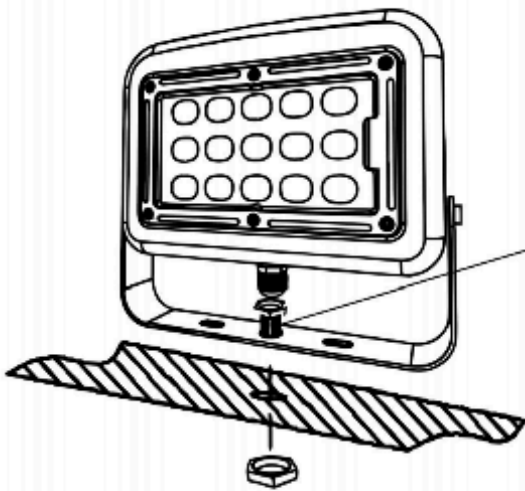
The JL-243 is applicable to control any independent LED lighting automatically in accordance with the ambient natural lighting level. The photocell is IP65 rated, with built-in 40KA Surge Arrester. The photocell is available with constant on/off dimming, midnight dimming and LED decay compensation.

FEATURES

- Rated Voltage 120-277V
- Rated Frequency 50/60 Hz
- Power Consumption 50 Lux
- Ambient Temperature -40°C~+70°C

[Download the PDF of the JL-243 here.](#)

Trunnion Pole Drilling Detail



	A(mm)	B(mm)	C(mm)	D(mm)
30W	Ø10.5	9	16	50
50W	Ø10.5	9	16	90
70W-300W	Ø12	10.5	25	90

EPA Chart

Angle	ELF-30-XX (KN)	ELF-50-XX (KN)	ELF-70-XX (KN)	ELF-100-XX (KN)	ELF-150-XX (KN)	ELF-240-XX (KN)	ELF-300-XX (KN)
0°	0.093 ft²	0.158 ft²	0.246 ft²	0.246 ft²	0.246 ft²	0.273 ft²	0.273 ft²
10°	0.105 ft²	0.177 ft²	0.275 ft²	0.275 ft²	0.275 ft²	0.389 ft²	0.389 ft²
20°	0.122 ft²	0.208 ft²	0.397 ft²	0.397 ft²	0.397 ft²	0.71 ft²	0.71 ft²
30°	0.143 ft²	0.241 ft²	0.562 ft²	0.562 ft²	0.562 ft²	1.01 ft²	1.01 ft²
40°	0.166 ft²	0.295 ft²	0.71 ft²	0.71 ft²	0.71 ft²	1.279 ft²	1.279 ft²
50°	0.19 ft²	0.341 ft²	0.84 ft²	0.84 ft²	0.84 ft²	1.51 ft²	1.51 ft²
60°	0.212 ft²	0.379 ft²	0.944 ft²	0.944 ft²	0.944 ft²	1.701 ft²	1.701 ft²
70°	0.225 ft²	0.415 ft²	1.019 ft²	1.019 ft²	1.019 ft²	1.836 ft²	1.836 ft²
80°	0.233 ft²	0.419 ft²	1.066 ft²	1.066 ft²	1.066 ft²	1.92 ft²	1.92 ft²
90°	0.235 ft²	0.426 ft²	1.079 ft²	1.079 ft²	1.079 ft²	1.945 ft²	1.945 ft²