



UNIVERSAL REPLACEMENT POLES- SQUARE

Features & Specifications

Pole Shaft

- Straight poles are 4", 5" square.
- Pole shaft is electro-welded ASTM-A500 Grade C steel tubing with a minimum yield strength of 50,000 psi.
- On Tenon Mount steel poles, tenon is 2-3/8" O.D. high-strength pipe. Tenon is 4-3/4" in length.

Hand-Hole

- Standard hand-hole location is 12" above pole base.
- Poles 22' and above have a 3" x 6" reinforced hand-hole. Shorter poles have a 2" x 4" non-reinforced hand-hole.

Base

- Pole base is ASTM-A36 hot-rolled steel plate with a minimum yield strength of 36,000 psi.
- Two-piece square base cover is optional.

Anchor Bolts

- Galvanized anchor bolts are optional. When furnished, anchor bolts feature zinc-plated double nuts and washers.
- Anchor bolts conform to ASTM F 1554-07a Grade 55 with a minimum yield strength of 55,000 psi.

Ground Lug

- Ground lug is standard.

Duplex Receptacle

- Weatherproof duplex receptacle is optional.

Ground Fault Circuit Interrupter

- Self-testing ground fault circuit interrupter is optional.

Finishes

- Every pole is provided with a 5-year limited warranty.

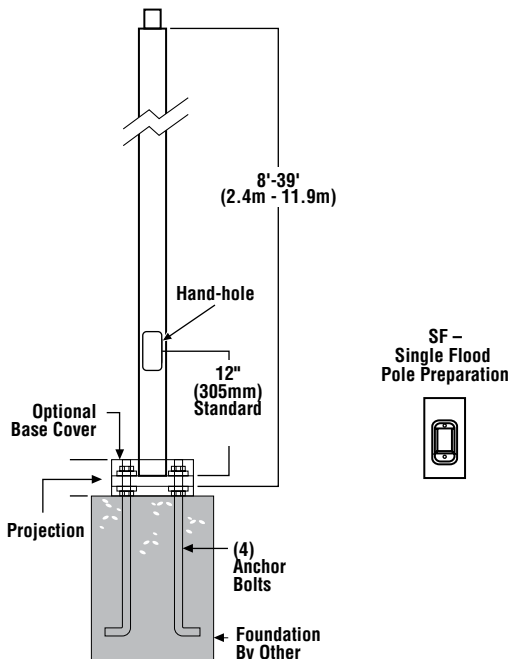
Determining the Base Plate/Luminaire/Pole Combination For Your Application:

- Measure bolt circle to determine correct base plate
- Select luminaire from luminaire ordering information
- Select bracket configuration if required
- Determine EPA value from luminaire/bracket EPA chart
- Select pole height
- Select MPH to match wind speed in the application area (See windspeed maps).
- Confirm pole EPA equal to or exceeding value from note above
- Consult factory for special wind load requirements and banner brackets

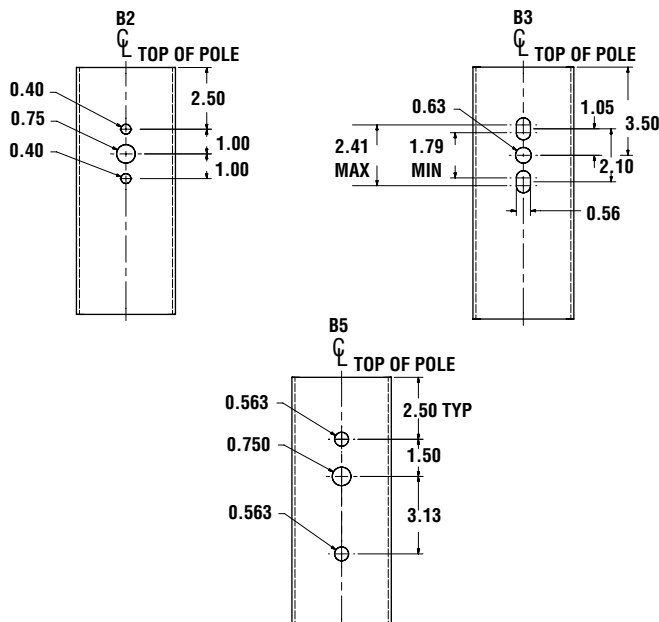


Product Dimensions

SQT -
N= 2-3/8" (60mm) O.D. x 4-3/4" (121mm) Tenon



Bolt-On Mount 2-Bolt Pattern





UNIVERSAL REPLACEMENT POLES- SQUARE

Features & Specifications (Cont.)

SHIPPING WEIGHTS - Steel Square Poles

| | |
|---|--------------------|
| 4"(102mm) sq. 11 Ga. is approximately | 7.50 lbs./ft. |
| 4"(102mm) sq. 07 Ga. is approximately | 10.00 lbs./ft. |
| 5"(127mm) sq. 11 Ga. is approximately | 9.00 lbs./ft. |
| 5"(127mm) sq. 07 Ga. is approximately | 12.50 lbs./ft. |
| 6"(152mm) sq. 07 Ga. is approximately | 15.40 lbs./ft. |
| Anchor Bolts (3/4" x 30")(19mm x 762mm) | 15 lbs. (7kg)/set |
| Anchor Bolts (1" x 36")(25mm x 914mm) | 30 lbs. (14kg)/set |

DRILLING LOCATIONS

Side "A" (Hand-hole Side)

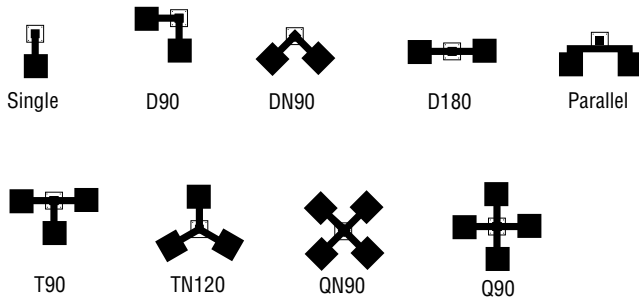
| Sides | A | B | C | D |
|--------------------|---|---|---|---|
| Hand-hole | X | | | |
| Single | X | | | |
| D180 | | X | | X |
| D90 | X | | | X |
| DN90 ¹ | | | | |
| T90 | X | X | | X |
| TN120 ² | | | | |
| Q90 | X | X | X | X |
| QN90 ³ | | | | |
| Single FBO | X | | | |
| Double FBO | | X | | X |

Notes:

- 1 - Two locations will be 45° to the left and right of Side A.
- 2 - Other two locations will be 120° to the left and right of Side A.
- 3 - Two locations will be 45° to the left and right of Side A and two locations will be 135° to the left and right of Side A.

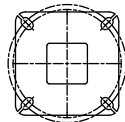
Consult factory for custom variations. Standard SF and DF pole preparations are located 3/4 of the height of the pole from the base, except on 20' poles. Maximum height for SF and DF pole preparations on 20' poles is 13' from the base.

Fixture Configurations



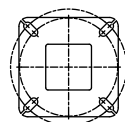
Bolt Circle

4" (102mm) square
10-1/2" (267mm) sq.



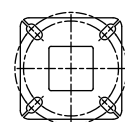
12" (305mm) Dia. Bolt Circle

5" (127mm) square
11-1/8" (283mm) sq.



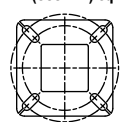
13" (330mm) Dia. Bolt Circle

5" (127mm) square
10-1/8" (257mm) sq.



13" (330mm) Dia. Bolt Circle

6" (152mm) square
12" (305mm) sq.



12" (305mm) Dia. Bolt Circle

| Bolt Circle Designator | E | F | G | H |
|--------------------------------------|---|---|---|---|
| Bolt Circle | Slotted 11"-12" (279mm-305mm) | Slotted 11"-13" (279mm-330mm) | Slotted 11"-13" (279mm-330mm) | Slotted 11"-14" (279mm-356mm) |
| Anchor Bolt Size | 3/4" x 30" (19mm x 762mm) | 3/4" x 30" (19mm x 762mm) | 1" x 36" (25mm x 914mm) | 1" x 36" (25mm x 914mm) |
| Anchor Bolt Projection | 3-1/4" (83mm) | 3-1/4" (83mm) | 4" (102mm) | 4" (102mm) |
| Base Plate Opening for Wireway Entry | 4-1/8" (105mm) | 5-1/8" (130mm) | 5-1/8" (130mm) | 6-1/8" (156mm) |
| Base Plate Dimensions | 10-1/2" sq. x 3/4" thk. (267mm x 19mm) | 11-1/8" sq. x 3/4" thk. (283mm x 19mm) | 11-3/4" sq. x 1" thk. (298mm x 25mm) | 12 1/2" sq. x 1 1/8" thk. (318mm x 29mm) |
| Pole Gauge | 11 | 11 | 7 | 7 |

Note: Base plate illustrations may change without notice. Do not use for setting anchor bolts. Consult factory for the appropriate anchor bolt template.



UNIVERSAL REPLACEMENT POLES- SQUARE

Ordering Guide

TYPICAL ORDER EXAMPLE: **SU5-BO-S07G-20-S-BRZ**

| Pole Series | Mounting Method | Material | Height ² | Mounting Configuration | Pole Finish | Optional Accessories |
|---|--|---------------------|---------------------|---|--|---|
| SU4 - 4" x 4" Square Straight Pole | BO - Bolt-On Mount¹ - See pole selection guide for patterns and fixture matches. T - Tenon Mount - See pole selection guide for tenon and fixture/bracket matches. | S11G – 11 Ga. Steel | 17.5' | S – Single/Parallel | BRZ – Bronze | GA – Galvanized Anchor Bolts SF – Single Flood ³ DF – Double Flood ³ LAB – Less Anchor Bolts |
| SU5 - 5" x 5" Square Straight Pole | | (4SQ and 5SQ only) | 20' | D180 – Double D90 – Double | BLK – Black WHT – White | |
| | | S07G – 07 Ga. Steel | 22.5' | DN90 – Double | | |
| | | | 25' | T90 – Triple | | |
| | | | 27' | TN120 – Triple Q90 – Quad QN90 – Quad | *Special colors available, consult factory | |

FOOTNOTES:

- 1 - See Area Light Brackets - 3" Reduced Drill Pattern and Area Light Brackets - 5" Traditional Drill Pattern spec sheets.
- 2 - Pole heights will have +/- 1/2" tolerance
- 3 - Universal Square Poles can come with Tenon Mount adapter installed
- 4 - See Flood Lighting Brackets section for choice of FBO brackets
- 5 - Galvanized anchor bolts and base covers are **optional accessories**

Specifications and dimensions subject to change without notice.



UNIVERSAL REPLACEMENT POLES- SQUARE

Wind Speed

EPA Information

All ATG poles are guaranteed to meet the EPA requirements listed. ATG is not responsible if a pole order has a lower EPA rating than the indicated wind-loading zone where the pole will be located.

CAUTION: This guarantee does not apply if the pole/bracket/fixture combination is used to support any other items such as flags, pennants, or signs, which would add stress to the pole. ATG cannot accept responsibility for harm or damage caused in these situations.

NOTE: Pole calculations include a 1.3 gust factor over steady wind velocity. Example: poles designed to withstand 80 MPH steady wind will withstand gusts to 104 MPH. EPAs are for locations 100 miles away from hurricane ocean lines. Consult ATG for other areas. Note: Hurricane ocean lines are the Atlantic and Gulf of Mexico coastal areas. For applications in Florida or Canada, consult factory.

Use ONLY with "Wind Speed Map for ASCE 7-10"

| POLE ¹ | Mtg. Height Length (ft) | Wall Thick (ga) | BOLT CIRCLE | | | EPA | | | | | | | | |
|------------------------------|-------------------------|-----------------|-------------|-----------|----------------------|---------|---------|---------|---------|---------|---------|---------|---------|---------|
| | | | Designator | Dia. (in) | Anchor bolt Dia (in) | 110 MPH | 115 MPH | 120 MPH | 130 MPH | 140 MPH | 150 MPH | 160 MPH | 170 MPH | 180 MPH |
| 4' x 11-ga x 12' | 12 | 11 | E | 11" | 0.75 | 14.0 | 12.5 | 11.3 | 9.3 | 7.6 | 6.3 | 5.3 | 4.4 | 3.6 |
| 4' x 11-ga x 12' | 12 | 11 | E | 12" | 0.75 | 14.0 | 12.5 | 11.3 | 9.3 | 7.6 | 6.3 | 5.3 | 4.4 | 3.6 |
| 4' x 11-ga x 14' | 14 | 11 | E | 11" | 0.75 | 10.7 | 9.6 | 8.5 | 6.8 | 5.5 | 4.4 | 3.5 | 2.8 | 2.1 |
| 4' x 11-ga x 14' | 14 | 11 | E | 12" | 0.75 | 10.7 | 9.6 | 8.5 | 6.8 | 5.5 | 4.4 | 3.5 | 2.8 | 2.1 |
| 4' x 11-ga x 16' | 16 | 11 | E | 11" | 0.75 | 8.2 | 7.2 | 6.4 | 5.0 | 3.8 | 2.9 | 2.1 | 1.5 | 1.0 |
| 4' x 11-ga x 16' | 16 | 11 | E | 12" | 0.75 | 8.2 | 7.2 | 6.4 | 5.0 | 3.8 | 2.9 | 2.1 | 1.5 | 1.0 |
| 4' x 11-ga x 18' | 18 | 11 | E | 11" | 0.75 | 6.3 | 5.4 | 4.7 | 3.4 | 2.4 | 1.6 | 1.0 | 0.4 | - |
| 4' x 11-ga x 18' | 18 | 11 | E | 12" | 0.75 | 6.3 | 5.4 | 4.7 | 3.4 | 2.4 | 1.6 | 1.0 | 0.4 | - |
| 4' x 11-ga x 20' | 20 | 11 | E | 11" | 0.75 | 4.7 | 3.9 | 3.2 | 2.2 | 1.3 | 0.6 | - | - | - |
| 4' x 11-ga x 20' | 20 | 11 | E | 12" | 0.75 | 4.7 | 3.9 | 3.2 | 2.2 | 1.3 | 0.6 | - | - | - |
| 4' x 11-ga x 22' | 22 | 11 | E | 11" | 0.75 | 8.1 | 7.0 | 6.1 | 4.5 | 3.3 | 2.3 | 1.4 | 0.7 | - |
| 4' x 11-ga x 22' | 22 | 11 | E | 11-1/2" | 0.75 | 7.6 | 6.6 | 5.7 | 4.2 | 3.0 | 2.0 | 1.2 | 0.5 | - |
| 4' x 11-ga x 22' | 22 | 11 | E | 12" | 0.75 | 7.1 | 6.1 | 5.3 | 3.8 | 2.6 | 1.7 | 0.9 | - | - |
| 4' x 11-ga x 24' | 24 | 11 | E | 11" | 0.75 | 6.4 | 5.5 | 4.6 | 3.2 | 2.1 | 1.2 | 0.4 | - | - |
| 4' x 11-ga x 24' | 24 | 11 | E | 11-1/2" | 0.75 | 6.0 | 5.1 | 4.2 | 2.9 | 1.8 | 0.9 | - | - | - |
| 4' x 11-ga x 24' | 24 | 11 | E | 12" | 0.75 | 5.6 | 4.6 | 3.8 | 2.5 | 1.5 | 0.7 | - | - | - |
| 4' x 11-ga x 26' | 26 | 11 | E | 11" | 0.75 | 5.0 | 4.1 | 3.3 | 2.0 | 1.0 | - | - | - | - |
| 4' x 11-ga x 26' | 26 | 11 | E | 11-1/2" | 0.75 | 4.6 | 3.7 | 3.0 | 1.7 | 0.7 | - | - | - | - |
| 4' x 11-ga x 26' | 26 | 11 | E | 12" | 0.75 | 4.1 | 3.3 | 2.6 | 1.4 | 0.5 | - | - | - | - |
| 4' x 7-ga x 14' | 14 | 7 | E | 11" | 0.75 | 19.2 | 17.3 | 15.5 | 12.9 | 10.7 | 8.9 | 7.5 | 6.3 | 5.3 |
| 4' x 7-ga x 14' | 14 | 7 | E | 11-1/2" | 0.75 | 18.2 | 16.4 | 14.8 | 12.3 | 10.2 | 8.5 | 7.1 | 6.0 | 5.0 |
| 4' x 7-ga x 14' | 14 | 7 | E | 12" | 0.75 | 17.2 | 15.5 | 14.1 | 11.6 | 9.6 | 8.0 | 6.7 | 5.6 | 4.6 |
| 4' x 7-ga x 16' | 16 | 7 | E | 11" | 0.75 | 15.3 | 13.9 | 12.5 | 10.1 | 8.2 | 6.7 | 5.5 | 4.5 | 3.7 |
| 4' x 7-ga x 16' | 16 | 7 | E | 11-1/2" | 0.75 | 14.6 | 13.1 | 11.9 | 9.6 | 7.8 | 6.3 | 5.2 | 4.2 | 3.4 |
| 4' x 7-ga x 16' | 16 | 7 | E | 12" | 0.75 | 13.9 | 12.3 | 11.2 | 9.0 | 7.3 | 5.9 | 4.8 | 3.9 | 3.1 |
| 4' x 7-ga x 18' | 18 | 7 | E | 11" | 0.75 | 12.5 | 11.0 | 9.9 | 7.9 | 6.3 | 5.0 | 3.9 | 3.0 | 2.3 |
| 4' x 7-ga x 18' | 18 | 7 | E | 11-1/2" | 0.75 | 11.8 | 10.5 | 9.4 | 7.5 | 5.9 | 4.7 | 3.6 | 2.7 | 2.0 |
| 4' x 7-ga x 18' | 18 | 7 | E | 12" | 0.75 | 11.1 | 9.9 | 8.8 | 7.0 | 5.5 | 4.3 | 3.3 | 2.5 | 1.8 |
| 4' x 7-ga x 20' | 20 | 7 | E | 11" | 0.75 | 10.2 | 8.9 | 7.8 | 6.0 | 4.6 | 3.5 | 2.6 | 1.8 | 1.2 |
| 4' x 7-ga x 20' | 20 | 7 | E | 11-1/2" | 0.75 | 9.6 | 8.4 | 7.4 | 5.6 | 4.3 | 3.2 | 2.3 | 1.5 | 0.9 |
| 4' x 7-ga x 20' | 20 | 7 | E | 12" | 0.75 | 9.0 | 7.9 | 6.9 | 5.2 | 3.9 | 2.9 | 2.0 | 1.3 | 0.7 |
| 4' x 7-ga x 22' | 22 | 7 | E | 11" | 0.75 | 8.2 | 7.1 | 6.1 | 4.5 | 3.3 | 2.3 | 1.4 | 0.7 | - |
| 4' x 7-ga x 22' | 22 | 7 | E | 11-1/2" | 0.75 | 7.7 | 6.6 | 5.7 | 4.2 | 3.0 | 2.0 | 1.2 | 0.5 | - |
| 4' x 7-ga x 22' | 22 | 7 | E | 12" | 0.75 | 7.1 | 6.1 | 5.3 | 3.8 | 2.6 | 1.7 | 0.9 | - | - |
| 4' x 7-ga x 24' | 24 | 7 | E | 11" | 0.75 | 6.4 | 5.5 | 4.6 | 3.2 | 2.1 | 1.2 | - | - | - |
| 4' x 7-ga x 24' | 24 | 7 | E | 11-1/2" | 0.75 | 6.0 | 5.1 | 4.2 | 2.9 | 1.8 | 0.9 | - | - | - |
| 4' x 7-ga x 24' | 24 | 7 | E | 12" | 0.75 | 5.5 | 4.6 | 3.8 | 2.5 | 1.5 | 0.7 | - | - | - |
| 4' x 7-ga x 26' | 26 | 7 | E | 11" | 0.75 | 5.0 | 4.1 | 3.3 | 2.0 | 1.0 | - | - | - | - |
| 4' x 7-ga x 26' | 26 | 7 | E | 11-1/2" | 0.75 | 4.6 | 3.7 | 2.9 | 1.7 | 0.7 | - | - | - | - |
| 4' x 7-ga x 26' | 26 | 7 | E | 12" | 0.75 | 4.1 | 3.3 | 2.6 | 1.4 | 0.5 | - | - | - | - |
| 4' x 7-ga x 28" ² | 28 | 7 | E | 11" | 0.75 | 3.6 | 2.8 | 2.2 | 1.0 | - | - | - | - | - |
| 4' x 7-ga x 28" ² | 28 | 7 | E | 11-1/2" | 0.75 | 3.3 | 2.5 | 1.8 | 0.7 | - | - | - | - | - |
| 4' x 7-ga x 28" ² | 28 | 7 | E | 12" | 0.75 | 2.9 | 2.2 | 1.5 | - | - | - | - | - | - |
| 4' x 7-ga x 30" ² | 30 | 7 | E | 11" | 0.75 | 2.5 | 1.8 | 1.1 | - | - | - | - | - | - |
| 4' x 7-ga x 30" ² | 30 | 7 | E | 11-1/2" | 0.75 | 2.2 | 1.5 | 0.8 | - | - | - | - | - | - |
| 4' x 7-ga x 30" ² | 30 | 7 | E | 12" | 0.75 | 1.8 | 1.1 | 0.5 | - | - | - | - | - | - |



UNIVERSAL REPLACEMENT POLES- SQUARE

Wind Speed

| POLE ¹ | Mtg. Height Length (ft) | Wall Thick (ga) | BOLT CIRCLE | | | EPA | | | | | | | | |
|-------------------|-------------------------|-----------------|-------------|-----------|----------------------|---------|---------|---------|---------|---------|---------|---------|---------|---------|
| | | | Designator | Dia. (in) | Anchor bolt Dia (in) | 110 MPH | 115 MPH | 120 MPH | 130 MPH | 140 MPH | 150 MPH | 160 MPH | 170 MPH | 180 MPH |
| 5' x 11-ga x 14' | 14 | 11 | F | 11" | 0.75 | 17.6 | 15.8 | 14.2 | 11.5 | 9.4 | 7.7 | 6.3 | 5.2 | 4.3 |
| 5' x 11-ga x 14' | 14 | 11 | F | 13" | 0.75 | 17.6 | 15.8 | 14.2 | 11.5 | 9.4 | 7.7 | 6.3 | 5.2 | 4.3 |
| 5' x 11-ga x 16' | 16 | 11 | F | 11" | 0.75 | 13.9 | 12.2 | 11.0 | 8.8 | 7.0 | 5.5 | 4.3 | 3.4 | 2.5 |
| 5' x 11-ga x 16' | 16 | 11 | F | 13" | 0.75 | 13.9 | 12.2 | 11.0 | 8.8 | 7.0 | 5.5 | 4.3 | 3.4 | 2.5 |
| 5' x 11-ga x 18' | 18 | 11 | F | 11" | 0.75 | 11.0 | 9.6 | 8.4 | 6.5 | 5.0 | 3.7 | 2.7 | 1.8 | 1.1 |
| 5' x 11-ga x 18' | 18 | 11 | F | 13" | 0.75 | 11.0 | 9.6 | 8.4 | 6.5 | 5.0 | 3.7 | 2.7 | 1.8 | 1.1 |
| 5' x 11-ga x 20' | 20 | 11 | F | 11" | 0.75 | 8.6 | 7.4 | 6.4 | 4.6 | 3.3 | 2.2 | 1.3 | 0.5 | - |
| 5' x 11-ga x 20' | 20 | 11 | F | 13" | 0.75 | 8.6 | 7.4 | 6.4 | 4.6 | 3.3 | 2.2 | 1.3 | 0.5 | - |
| 5' x 11-ga x 22' | 22 | 11 | F | 11" | 0.75 | 12.7 | 11.1 | 9.6 | 7.4 | 5.6 | 4.1 | 3.0 | 2.0 | 1.1 |
| 5' x 11-ga x 22' | 22 | 11 | F | 12" | 0.75 | 10.3 | 8.9 | 7.7 | 5.7 | 4.1 | 2.8 | 1.8 | 0.9 | - |
| 5' x 11-ga x 22' | 22 | 11 | F | 13" | 0.75 | 8.6 | 7.4 | 6.4 | 4.6 | 3.1 | 2.0 | 1.1 | - | - |
| 5' x 11-ga x 24' | 24 | 11 | F | 11" | 0.75 | 10.2 | 8.9 | 7.6 | 5.6 | 4.0 | 2.6 | 1.6 | 0.7 | - |
| 5' x 11-ga x 24' | 24 | 11 | F | 12" | 0.75 | 8.0 | 6.9 | 5.8 | 4.0 | 2.6 | 1.5 | 0.5 | - | - |
| 5' x 11-ga x 24' | 24 | 11 | F | 13" | 0.75 | 6.7 | 5.5 | 4.6 | 3.0 | 1.7 | 0.7 | - | - | - |
| 5' x 11-ga x 26' | 26 | 11 | F | 11" | 0.75 | 8.1 | 6.9 | 5.8 | 4.0 | 2.5 | 1.3 | - | - | - |
| 5' x 11-ga x 26' | 26 | 11 | F | 12" | 0.75 | 6.2 | 5.1 | 4.1 | 2.6 | 1.3 | - | - | - | - |
| 5' x 11-ga x 26' | 26 | 11 | F | 13" | 0.75 | 5.0 | 4.0 | 3.1 | 1.6 | 0.5 | - | - | - | - |
| 5' x 11-ga x 28' | 28 | 11 | F | 11" | 0.75 | 6.3 | 5.2 | 4.3 | 2.5 | 1.1 | - | - | - | - |
| 5' x 11-ga x 28' | 28 | 11 | F | 12" | 0.75 | 4.6 | 3.6 | 2.7 | 1.2 | - | - | - | - | - |
| 5' x 11-ga x 28' | 28 | 11 | F | 13" | 0.75 | 3.4 | 2.5 | 1.7 | - | - | - | - | - | - |
| 5' x 11-ga x 30' | 30 | 11 | F | 11" | 0.75 | 4.7 | 3.7 | 2.8 | 1.2 | - | - | - | - | - |
| 5' x 11-ga x 30' | 30 | 11 | F | 12" | 0.75 | 3.1 | 2.2 | 1.4 | - | - | - | - | - | - |
| 5' x 11-ga x 30' | 30 | 11 | F | 13" | 0.75 | 2.0 | 1.2 | 0.5 | - | - | - | - | - | - |
| 5' x 7-ga x 20' | 20 | 7 | G | 11" | 0.75 | 19.0 | 17.0 | 15.0 | 12.2 | 9.7 | 7.8 | 6.2 | 5.0 | 3.8 |
| 5' x 7-ga x 20' | 20 | 7 | G | 12" | 0.75 | 21.4 | 19.1 | 17.1 | 13.8 | 11.2 | 9.1 | 7.3 | 5.9 | 4.7 |
| 5' x 7-ga x 20' | 20 | 7 | G | 13" | 0.75 | 21.4 | 19.2 | 17.2 | 13.9 | 11.3 | 9.2 | 7.4 | 6.0 | 4.8 |
| 5' x 7-ga x 20' | 20 | 7 | G | 11" | 1 | 21.7 | 19.4 | 17.4 | 14.0 | 11.4 | 9.3 | 7.5 | 6.0 | 4.8 |
| 5' x 7-ga x 20' | 20 | 7 | G | 13" | 1 | 21.7 | 19.4 | 17.4 | 14.0 | 11.4 | 9.3 | 7.5 | 6.0 | 4.8 |
| 5' x 7-ga x 22' | 22 | 7 | G | 11" | 0.75 | 16.0 | 14.1 | 12.5 | 9.8 | 7.6 | 5.9 | 4.4 | 3.3 | 2.3 |
| 5' x 7-ga x 22' | 22 | 7 | G | 12" | 0.75 | 17.7 | 15.9 | 14.2 | 11.2 | 8.7 | 7.0 | 5.4 | 4.1 | 3.0 |
| 5' x 7-ga x 22' | 22 | 7 | G | 13" | 0.75 | 19.9 | 17.3 | 15.6 | 12.6 | 10.0 | 8.0 | 6.3 | 5.0 | 3.8 |
| 5' x 7-ga x 22' | 22 | 7 | G | 11" | 1 | 21.0 | 18.7 | 16.7 | 13.4 | 10.6 | 8.5 | 6.8 | 5.4 | 4.2 |
| 5' x 7-ga x 22' | 22 | 7 | G | 12" | 1 | 23.4 | 20.6 | 18.4 | 15.0 | 12.2 | 9.9 | 8.0 | 6.4 | 5.1 |
| 5' x 7-ga x 22' | 22 | 7 | G | 13" | 1 | 21.3 | 18.8 | 17.0 | 13.7 | 11.0 | 8.8 | 7.0 | 5.6 | 4.3 |
| 5' x 7-ga x 24' | 24 | 7 | G | 11" | 0.75 | 13.3 | 11.6 | 10.0 | 7.7 | 5.7 | 4.2 | 2.9 | 1.9 | 1.0 |
| 5' x 7-ga x 24' | 24 | 7 | G | 12" | 0.75 | 15.0 | 13.0 | 11.6 | 8.9 | 6.8 | 5.1 | 3.8 | 2.6 | 1.7 |
| 5' x 7-ga x 24' | 24 | 7 | G | 13" | 0.75 | 16.6 | 14.6 | 12.9 | 10.2 | 8.0 | 6.1 | 4.6 | 3.3 | 2.3 |
| 5' x 7-ga x 24' | 24 | 7 | G | 11" | 1 | 17.5 | 15.7 | 13.9 | 10.9 | 8.6 | 6.7 | 5.0 | 3.7 | 2.7 |
| 5' x 7-ga x 24' | 24 | 7 | G | 12" | 1 | 20.0 | 17.4 | 15.4 | 12.3 | 9.9 | 7.8 | 6.0 | 4.7 | 3.5 |
| 5' x 7-ga x 24' | 24 | 7 | G | 13" | 1 | 18.1 | 16.0 | 14.2 | 11.0 | 8.7 | 6.7 | 5.3 | 3.9 | 2.8 |
| 5' x 7-ga x 26' | 26 | 7 | G | 11" | 0.75 | 10.9 | 9.3 | 8.0 | 5.9 | 4.1 | 2.7 | 1.6 | 0.6 | - |
| 5' x 7-ga x 26' | 26 | 7 | G | 12" | 0.75 | 12.4 | 10.9 | 9.5 | 7.0 | 5.1 | 3.6 | 2.3 | 1.3 | - |
| 5' x 7-ga x 26' | 26 | 7 | G | 13" | 0.75 | 14.0 | 12.3 | 10.7 | 8.1 | 6.0 | 4.4 | 3.1 | 2.0 | 1.0 |
| 5' x 7-ga x 26' | 26 | 7 | G | 11" | 1 | 15.0 | 13.2 | 11.5 | 8.8 | 6.7 | 4.9 | 3.5 | 2.3 | 1.3 |



UNIVERSAL REPLACEMENT POLES- SQUARE

Wind Speed

| POLE ¹ | Mtg. Height Length (ft) | Wall Thick (ga) | BOLT CIRCLE | | | EPA | | | | | | | | |
|-------------------|-------------------------|-----------------|-------------|-----------|----------------------|---------|---------|---------|---------|---------|---------|---------|---------|---------|
| | | | Designator | Dia. (in) | Anchor bolt Dia (in) | 110 MPH | 115 MPH | 120 MPH | 130 MPH | 140 MPH | 150 MPH | 160 MPH | 170 MPH | 180 MPH |
| 5' x 7-ga x 26' | 26 | 7 | G | 12" | 1 | 17.0 | 14.8 | 13.0 | 10.2 | 7.9 | 6.0 | 4.4 | 3.1 | 2.1 |
| 5' x 7-ga x 26' | 26 | 7 | G | 13" | 1 | 15.3 | 13.5 | 11.8 | 9.0 | 6.8 | 5.0 | 3.6 | 2.5 | 1.4 |
| 5' x 7-ga x 28' | 28 | 7 | G | 11" | 0.75 | 8.9 | 7.4 | 6.3 | 4.3 | 2.7 | 1.4 | - | - | - |
| 5' x 7-ga x 28' | 28 | 7 | G | 12" | 0.75 | 10.2 | 8.8 | 7.5 | 5.3 | 3.5 | 2.1 | 1.0 | - | - |
| 5' x 7-ga x 28' | 28 | 7 | G | 13" | 0.75 | 11.8 | 10.2 | 8.8 | 6.4 | 4.5 | 3.0 | 1.7 | 0.7 | - |
| 5' x 7-ga x 28' | 28 | 7 | G | 11" | 1 | 12.5 | 10.9 | 9.5 | 7.0 | 5.0 | 3.3 | 2.1 | 1.0 | - |
| 5' x 7-ga x 28' | 28 | 7 | G | 12" | 1 | 14.2 | 12.4 | 11.0 | 8.2 | 6.0 | 4.3 | 3.0 | 1.7 | 0.8 |
| 5' x 7-ga x 28' | 28 | 7 | G | 13" | 1 | 12.9 | 11.0 | 9.7 | 7.2 | 5.2 | 3.6 | 2.2 | 1.1 | - |
| 5' x 7-ga x 30' | 30 | 7 | G | 11" | 0.75 | 7.0 | 5.8 | 4.7 | 2.8 | 1.3 | - | - | - | - |
| 5' x 7-ga x 30' | 30 | 7 | G | 12" | 0.75 | 8.4 | 7.0 | 5.8 | 3.8 | 2.2 | 0.9 | - | - | - |
| 5' x 7-ga x 30' | 30 | 7 | G | 13" | 0.75 | 9.7 | 8.2 | 7.0 | 4.8 | 3.0 | 1.6 | 0.5 | - | - |
| 5' x 7-ga x 30' | 30 | 7 | G | 11" | 1 | 10.4 | 8.8 | 7.6 | 5.3 | 3.4 | 2.0 | 0.8 | - | - |
| 5' x 7-ga x 30' | 30 | 7 | G | 12" | 1 | 12.0 | 10.3 | 9.0 | 6.4 | 4.4 | 2.9 | 1.6 | 0.5 | - |
| 5' x 7-ga x 30' | 30 | 7 | G | 13" | 1 | 10.6 | 9.1 | 7.7 | 5.5 | 3.6 | 2.1 | 1.0 | - | - |
| 5' x 7-ga x 35' | 35 | 7 | G | 11" | 0.75 | 3.2 | 2.2 | 1.2 | - | - | - | - | - | - |
| 5' x 7-ga x 35' | 35 | 7 | G | 12" | 0.75 | 4.4 | 3.2 | 2.2 | 0.5 | - | - | - | - | - |
| 5' x 7-ga x 35' | 35 | 7 | G | 13" | 0.75 | 5.5 | 4.2 | 3.1 | 1.3 | - | - | - | - | - |
| 5' x 7-ga x 35' | 35 | 7 | G | 11" | 1 | 6.0 | 4.8 | 3.6 | 1.8 | - | - | - | - | - |
| 5' x 7-ga x 35' | 35 | 7 | G | 12" | 1 | 7.3 | 6.0 | 4.8 | 2.7 | 1.1 | - | - | - | - |
| 5' x 7-ga x 35' | 35 | 7 | G | 13" | 1 | 6.3 | 5.0 | 3.8 | 1.9 | - | - | - | - | - |
| 6' x 7-ga x 24' | 24 | 7 | H | 11" | 1 | 16.5 | 14.4 | 12.6 | 9.6 | 7.2 | 5.3 | 3.8 | 2.5 | 1.4 |
| 6' x 7-ga x 24' | 24 | 7 | H | 12-1/2" | 1 | 19.8 | 17.5 | 15.4 | 12.0 | 9.2 | 7.0 | 5.3 | 3.8 | 2.7 |
| 6' x 7-ga x 24' | 24 | 7 | H | 14" | 1 | 23.0 | 20.5 | 18.0 | 14.3 | 11.2 | 8.9 | 6.9 | 5.3 | 3.8 |
| 6' x 7-ga x 26' | 26 | 7 | H | 11" | 1 | 13.7 | 11.8 | 10.2 | 7.5 | 5.3 | 3.6 | 2.1 | 1.0 | - |
| 6' x 7-ga x 26' | 26 | 7 | H | 12-1/2" | 1 | 16.5 | 14.6 | 12.6 | 9.6 | 7.0 | 5.2 | 3.6 | 2.2 | 1.1 |
| 6' x 7-ga x 26' | 26 | 7 | H | 14" | 1 | 19.6 | 17.3 | 15.2 | 11.7 | 8.9 | 6.7 | 5.0 | 3.5 | 2.2 |
| 6' x 7-ga x 28' | 28 | 7 | H | 11" | 1 | 11.0 | 9.3 | 7.8 | 5.5 | 3.5 | 1.9 | 0.6 | - | - |
| 6' x 7-ga x 28' | 28 | 7 | H | 12-1/2" | 1 | 13.8 | 12.0 | 10.2 | 7.5 | 5.2 | 3.4 | 1.9 | 0.7 | - |
| 6' x 7-ga x 28' | 28 | 7 | H | 14" | 1 | 16.4 | 14.5 | 12.5 | 9.4 | 6.9 | 4.7 | 3.2 | 1.8 | 0.7 |
| 6' x 7-ga x 30' | 30 | 7 | H | 11" | 1 | 9.0 | 7.3 | 6.0 | 3.6 | 1.9 | 0.5 | - | - | - |
| 6' x 7-ga x 30' | 30 | 7 | H | 12-1/2" | 1 | 11.4 | 9.6 | 8.0 | 5.5 | 3.4 | 1.7 | - | - | - |
| 6' x 7-ga x 30' | 30 | 7 | H | 14" | 1 | 14.0 | 12.0 | 10.0 | 7.2 | 5.0 | 3.2 | 1.6 | - | - |
| 6' x 7-ga x 32' | 32 | 7 | H | 11" | 1 | 7.0 | 5.5 | 4.2 | 2.0 | - | - | - | - | - |
| 6' x 7-ga x 32' | 32 | 7 | H | 12-1/2" | 1 | 9.2 | 7.6 | 6.0 | 3.8 | 1.8 | - | - | - | - |
| 6' x 7-ga x 32' | 32 | 7 | H | 14" | 1 | 11.4 | 9.7 | 8.0 | 5.4 | 3.2 | 1.6 | - | - | - |
| 6' x 7-ga x 34' | 34 | 7 | H | 11" | 1 | 5.1 | 3.7 | 2.5 | 0.6 | - | - | - | - | - |
| 6' x 7-ga x 34' | 34 | 7 | H | 12-1/2" | 1 | 7.2 | 5.6 | 4.4 | 2.2 | - | - | - | - | - |
| 6' x 7-ga x 34' | 34 | 7 | H | 14" | 1 | 9.3 | 7.6 | 6.2 | 3.6 | 1.7 | - | - | - | - |
| 6' x 7-ga x 35' | 35 | 7 | H | 11" | 1 | 4.2 | 3.0 | 1.8 | - | - | - | - | - | - |
| 6' x 7-ga x 35' | 35 | 7 | H | 12-1/2" | 1 | 6.2 | 4.8 | 3.6 | 1.4 | - | - | - | - | - |
| 6' x 7-ga x 35' | 35 | 7 | H | 14" | 1 | 8.2 | 6.6 | 5.2 | 2.9 | 1.0 | - | - | - | - |
| 6' x 7-ga x 39' | 39 | 7 | H | 11" | 1 | 1.0 | - | - | - | - | - | - | - | - |
| 6' x 7-ga x 39' | 39 | 7 | H | 12-1/2" | 1 | 3.0 | 1.6 | 0.5 | - | - | - | - | - | - |
| 6' x 7-ga x 39' | 39 | 7 | H | 14" | 1 | 4.6 | 3.3 | 2.0 | - | - | - | - | - | - |

Note:
 1- Poles shorter than these listed here in for each gauge have EPA rating equal to or greater than what is provided in this table. To Confirm EPA ratings on shorter poles, contact ATG.
 2- ATG recommends a vibration damper be ordered with this length.