

PL Hybrid PL Lamp

Indoor



ATG Hybrid PL lamp has been designed and engineered for demanding commercial applications. This UL classified lamp requires magnetic ballast runs directly or bypassing the ballast during installation and runs directly off line voltage to eliminate compatibility problems, incidental power loss, lifetime issues, and maintenance costs associated with ballasts.

Luminaire	Hybrid PL	Type
Project		
Product		
Notes		



Features

- 18W/26W CFL replacement
- Industry leadign efficacy up to 119 LPW
- Lasts 4 times longer than CFL, 60% eergy savings
- Environmentally friendly
- Work with or without ballast



Application
Full light output in spaces with temperatures down to -4°F (-20°C). Perfect for applications with frequent “on/off” switching cycles. Even one with little electrical experience, can achieve retrofit quickly and easily.

Electrical
18W/26W CFL replacement

Certifications/Listings

- RoHS
- UL

Input Voltage (VAC)	120-277
CRI	82
CCT(K)	3,000, 3,500, 4,000, 5,000
L70 (Hours)	50,000
Base	G24D
Color	White
PF	>.9
THD	<20%
Lens	Frosted
Temperature	-20°C to 45°C
Warranty	5 Years
Installation Orientation	Horizontal

NOTE: The PL lamp is not compatible with electronic ballasts and requires bypassing the ballast during installation. When used with a magnetic ballast, the PL lamp can function as a PNP lamp and operate with the existing ballast.

CAUTION –RISK OF FIRE. IF THE LAMP OR LUMINAIRE EXHIBITS UNDESIRABLE OPERATION (BUZZING, FLICKERING, ETC.), IMMEDIATELY TURN OFF POWER, REMOVE LAMP FROM LUMINAIRE AND CONTACT THE MANUFACTURER.

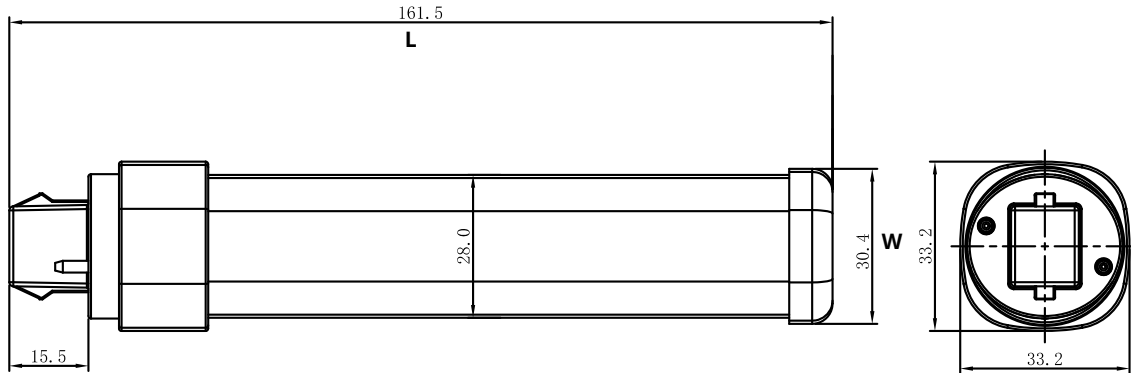
WARNING –Risk of fire or electric shock. LED Retrofit Kit installation requires knowledge of luminaire electrical systems. If not qualified, do not attempt installation. Contact a qualified electrician. Installation should be performed only by a qualified electrician in accordance with the National Electrical Code and relevant local code

WARNING –Risk of fire or electric shock. Install this kit only in the luminaires that have the construction features and dimensions shown in the photographs and/or drawings and where the input rating of the retrofit kit does not exceed the input rating of the luminaire.

Lumens										
Model	Equiv	Watts	Lumens	CCT	CRI	Efficacy	PF	THD	Instant Shipping	Listing
PLC-08H-G24D-830-HB	26W	8W	900LM	3000K	80	113LPW	0.9	20%	No	UL/RoHS
PLC-08H-G24D-835-HB	26W	8W	900LM	3500K	80	113LPW	0.9	20%	No	UL/RoHS
PLC-08H-G24D-840-HB	26W	8W	950LM	4000K	80	119LPW	0.9	20%	Yes	UL/RoHS
PLC-08H-G24D-850-HB	26W	8W	950LM	5000K	80	119LPW	0.9	20%	No	UL/RoHS
PLC-05H-G24D-830-HB	18W	5W	510LM	3000K	80	102LPW	0.9	20%	No	UL/RoHS
PLC-05H-G24D-835-HB	18W	5W	510LM	3500K	80	102LPW	0.9	20%	No	UL/RoHS
PLC-05H-G24D-840-HB	18W	5W	560LM	4000K	80	112LPW	0.9	20%	Yes	UL/RoHS
PLC-05H-G24D-850-HB	18W	5W	560LM	5000K	80	112LPW	0.9	20%	No	UL/RoHS

Dimensions (Base Dimensions on Next Page)

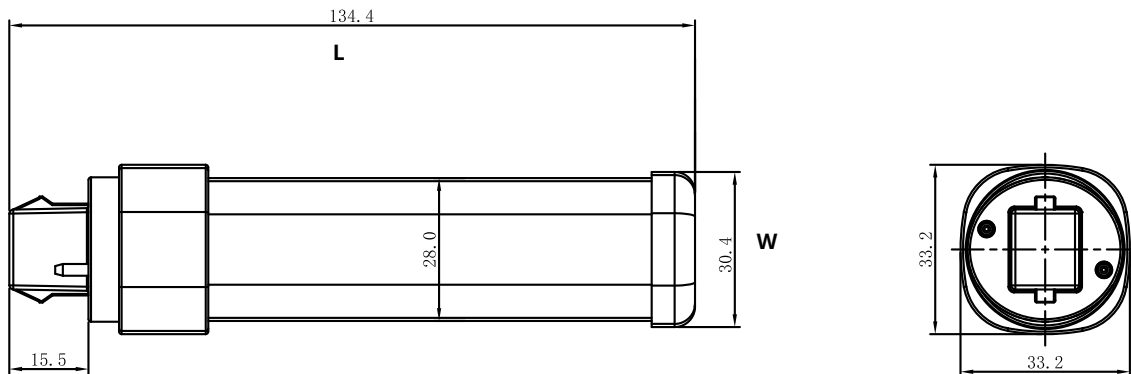
PLC-08H



Part No.	Length (L)	Width(W)
PLC-08H	161.15	30.4

Recorded in millimeters

PLC-05H



Part No.	Length (L)	Width(W)
PLC-05H	134.4	30.4

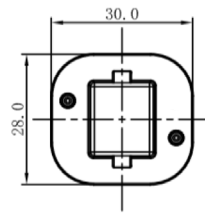
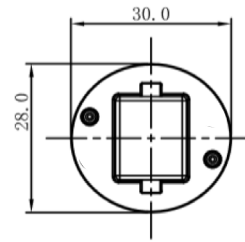
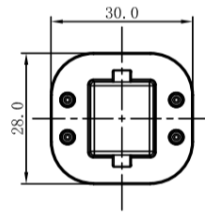
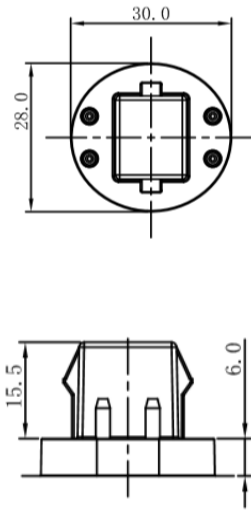
Recorded in millimeters

Dimensions of Base

**G24Q
G24D**

G24Q

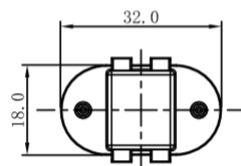
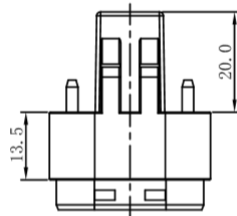
G24D



Part No.	Length (L)	Width(W)	Combined Height(H)
G24Q	30	28	21.5
G24D	30	28	21.5

Recorded in millimeters

GX23



Part No.	Length (L)	Width(W)	Combined Height(H)
GX23	32	18	33.5

Recorded in millimeters