

## CONTENTS

### Sensors

P1	BR1823
P2	FSP-221B-D
P3	JL-207

### Mounting

P5	Round Pole Adapter, Square Pole Adapter
P6	Wall Mount, 90° Wall Mount
P7	Spoke Bracket Single, Double 180° Arms, Double 90° Arms
P8	Spoke Bracket Triple, Quad
P9	Bullhorn Bracket Twin, Triple, Quad
P10	Verticle Tenon Twin, Triple, Quad (2)

## SENSORS

Our outdoor fixtures can be fitted with sensors that provide a variety of functions - including energy saving, occupant safety, security, and day to night modes. We carry compatible sensors such as PIR, Bi Level, and Microprocessor Photocells.

Part Number	Compatible Fixtures
BR1823	AE Aero Area Light AA Airia Area Light
JL-207	AA Airia Area Light
FSP-221B-D	PLF Myriad Flood Light

### BR1823 Digital PIR Bi-level Sensor

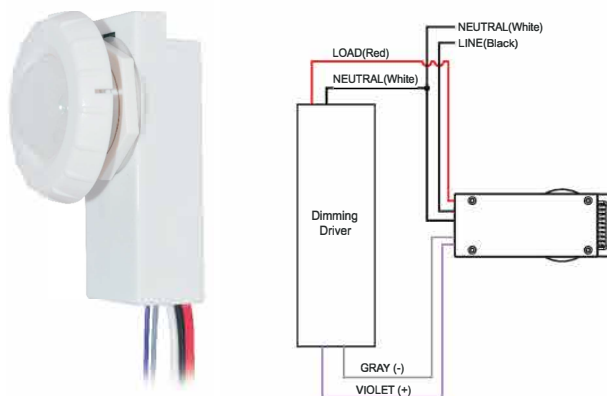


Daylight  
Sensor

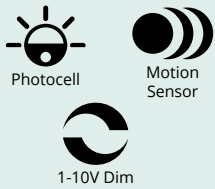


Motion  
Sensor

[See sensor specsheet for more information](#)



<b>Power Supply</b>	120-277VAC 50/60Hz
<b>Maximum Load -40°C-70 °C</b>	Resistive/Tungsten - 600W@120V Ballast Electronic (LED) -800/1200VA@120/277V
<b>Dim Control Output</b>	0-10V, max. 25mA sinking current
<b>Detection Radius/ Angle</b>	30ft@40ft height/360 °
<b>Mounting Height</b>	Max 24ft. @LW1 Max 40ft. @LS2
<b>Remote Range</b>	50ft. (15m) indoor, no backlight
<b>Humidity</b>	Max. 95% RH
<b>Temperature</b>	-40 °C - +70°C

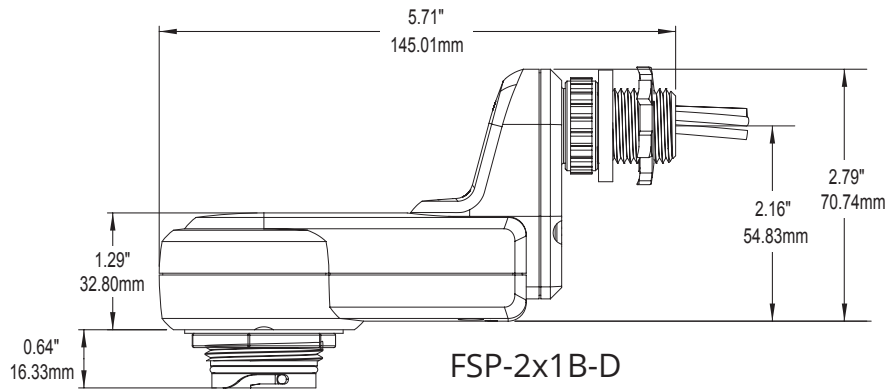


**FSP-221B-D\***  
**BiLevel Sensor**  
**IP66 Rated**  
**110-480V**



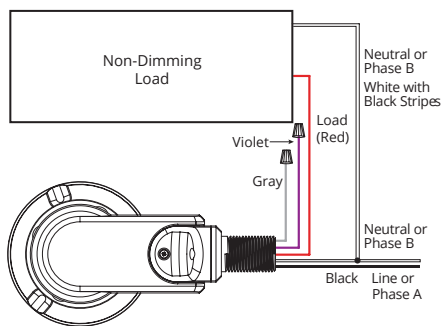
<b>Load Ratings</b>	@120V 0-800W tungsten, ballast, LED driver; 1/6hp motor @230-240V 0-300W ballast, LED driver @277V 0-1200W ballast, LED driver; 1/6hp motor @347/480V 0-1200W ballast, LED driver
<b>0-10V Sinking Current</b>	50mA
<b>High/Low Modes</b>	high:0-10V, low: off, 0-9.8V
<b>Time Delay</b>	30 sec, 1-30 min
<b>Cut Off Delay</b>	none, 1-59 minutes, 1-5 hours
<b>Sensitivity/Service mode</b>	low, med, max: on-fix, off-fix
<b>Setpoints</b>	hold off setpoint: none, 1-250 fc, auto photocell on/off setpoint: 1-250fc
<b>Ramp and Fade Times</b>	1-60 sec
<b>Op Temperature</b>	-40°F to +167°F (-40°C to +75°C)

**Dimensions**

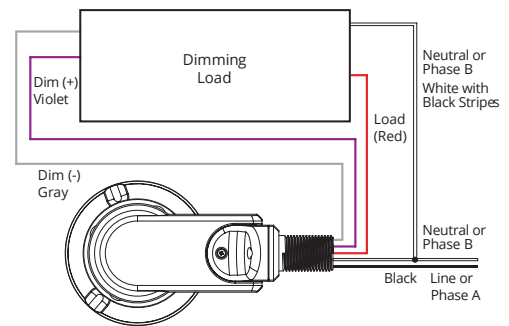


**Wiring**

**Wiring with non-dimming load.**



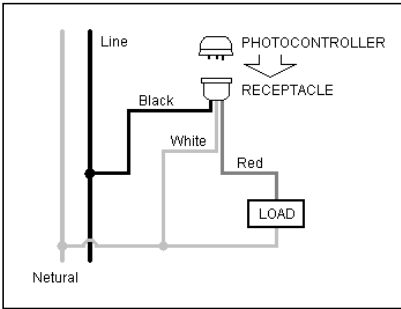
**Wiring with dimming load.**



[\\*See Sensor Specs sheet for more information](#)



JL-207  
Microprocessor  
Photocell  
120/277 VAC








JL-207C		JL-207F	
Power Supply	Rated: 120-277VAC Applicable: 105-305 VAC	Power Supply	Rated: 480VAC Applicable: 105-530 VAC
Rated Frequency	50/60Hz	Rated Frequency	50/60Hz
Rated Loading	1000W Tungsten, 1800VA Ballast	Rated Loading	1000W Tungsten, 1800VA Ballast
Power Consumption	0.5W (STD) / 0.9(HP)	Power Consumption	0.5W (STD) / 0.9(HP)
Typical On/Off Level	16Lx On / 24Lx Off	Typical On/Off Level	16Lx On / 24Lx Off
Ambient Temp	-40°C ~ +70°C	Ambient Temp	-40°C ~ +70°C
Related Humidity	99% . 100% (IP67)	Related Humidity	99% . 100% (IP67)
Overall Size	84 (Dia) x66mm	Overall Size	84 (Dia) x66mm
Weight Approx	110g (STD) / 125g(HP)	Weight Approx	110g (STD) / 125g(HP)

[See sensor specsheet for more information](#)

## MOUNTING

Mount and secure our flood and area light luminaires with a full line of mounting accessories. They are engineered and built to provide a durable and safe fixture mounting that allows for optimal positioning and aiming. We offer a variety of mounting options including Round Pole Adapters, Wall Mounts, Spoke Brackets, Bullhorns, and Tenon Brackets.

Luminaire	Area and Flood Accessories	Type
Project		
Product		
Notes		

Part Number	Compatible Fixtures		Name	Description
RTA-2.4TO3	AA Airia Area Light AS Access Area Light PLF Myriad Flood Light		Pole Tenon Adaptor/ Reducer	Round Tenon Adaptor 3"
RTA-2.4TO4				Round Tenon Adaptor 4"
STA-2.4TO4				Square Tenon Adaptor 4"
STA-2.4TO5				Square Tenon Adaptor 5"
WMB-90-2.4	AA Airia Area Light AS Access Area Light PLF Myriad Flood Light		Wall Mount Bracket	Wall Mount 90° Bracket
WMB-2.4				Wall Mount Bracket
SB-SG-2.4-3	AA Airia Area Light AS Access Area Light PLF Myriad Flood Light		Spoke Bracket	Single Spoke Bracket
SB-TW180-2.4				Twin Spoke Bracket 180° Arms
SB-TW90-2.4-3				Twin Spoke Bracket 90° Arms
SB-TR120-2.4-3				Triple spoke bracket
SB-QD-2.4-3				Quad Spoke Bracket
BH-TW-2.4-3	AA Airia Area Light AS Access Area Light PLF Myriad Flood Light		Bullhorn	Bullhorn twin bracket
BH-TR-2.4-3				Bullhorn triple bracket
BH-QD-2.4-3				Bullhorn quad bracket
VT-TW180-2.4-3	AA Airia Area Light AS Access Area Light PLF Myriad Flood Light		Vertical Tenon Bracket	Vertical Twin Tenon Bracket
VT-TR180-2.4-3				Vertical Triple Tenon Bracket (1 middle fixture)
VT-TR360-2.4-3				Vertical Triple Tenon Bracket
VT-QD180-2.4-3				Vertical Quad Tenon Bracket

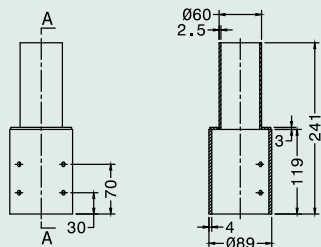
### Round Pole Adapter

Part No.

For use with round, non-tapered steel and aluminum poles. Furnished with four hex head stainless-steel bolts. Vertical tenon measures 2-3/8" O.D., and is made of steel tubing. Fixtures mounted to this bracket can be adjusted both vertically and horizontally.

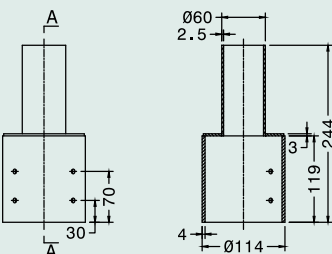
Description

RTA-2.4TO3



- 3" Round Pole Adaptor
- 2-3/8" O.D. Tenon
- Bronze Finish

RTA-2.4TO4



- 4" Round Pole Adaptor
- 2-3/8" O.D. Tenon
- Bronze Finish

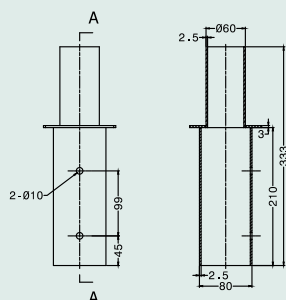
### Square Pole Adapter

Part No.

For use with square, non-tapered steel and aluminum poles. Vertical tenon measures 2-3/8" O.D., and is made of steel tubing. Fixtures mounted to this bracket can be adjusted both vertically and horizontally.

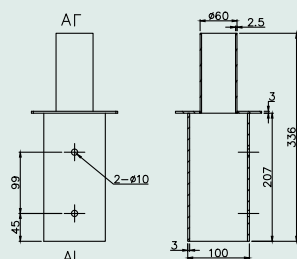
Description

STA-2.4TO4



- 4" Square Pole Adaptor
- 2-3/8" O.D. Tenon
- Bronze Finish

STA-2.4TO5



- 5" Square Pole Adaptor
- 2-3/8" O.D. Tenon
- Bronze Finish

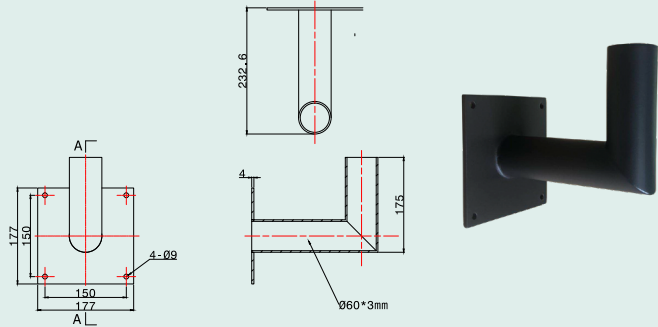
Wall Mount

Part No.

Description

WMB-90-2.4

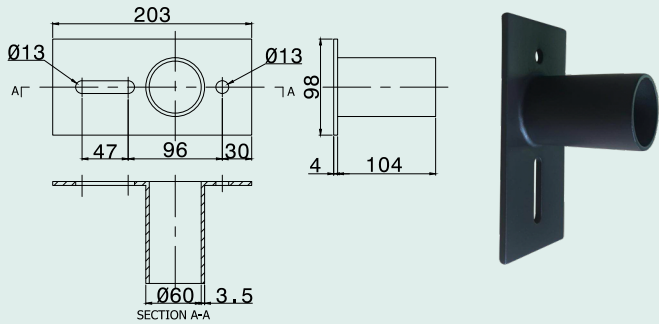
The 90° wall mount bracket with 2-3/8" tenon attaches a floodlight to almost any surface: wall, roof, or wood pole. Provides wiring access and a built-in 2-3/8" O.D. tenon to mount a fixture with our adjustable slipfitter.



- 90° wall mount bracket
- 2-3/8" O.D. Tenon
- Bronze Finish

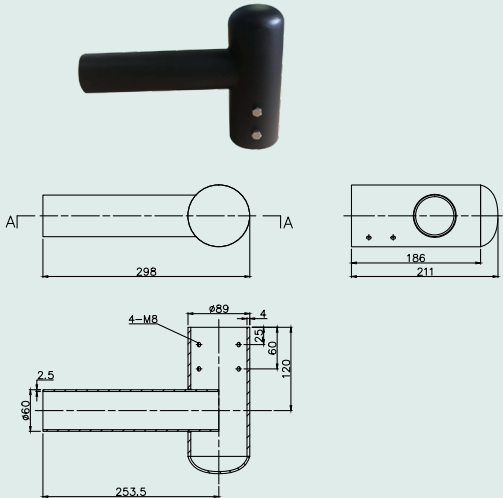
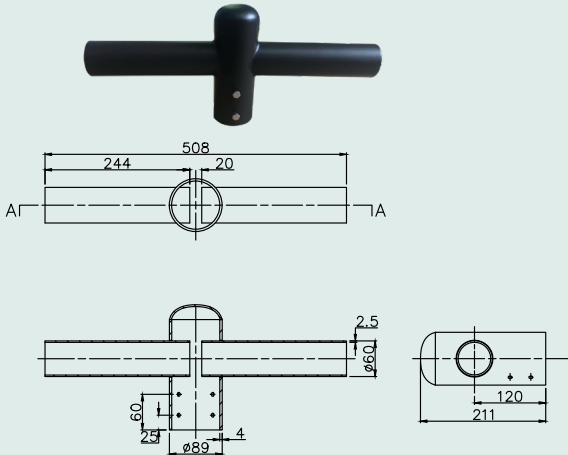
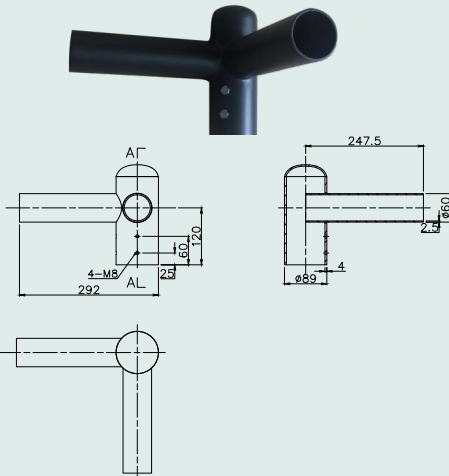
WMB-2.4

2-3/8" OD Horizontal Tenon MidPole Bracket is designed to mount light fixture that is equipped with an adjustable slipfitter onto a 2-3/8" OD horizontal tenon.



- Wall mount bracket
- 2-3/8" O.D. Tenon
- Bronze Finish

**Spoke Bracket**

Part No.	The Bracket is designed to mount on an existing pole. Fixtures can be mounted to each spoke and adjusted horizontally.	Description
SB-SG-2.4-3		<ul style="list-style-type: none"> <li>• Single spoke bracket (1 fixture)</li> <li>• Bronze Finish</li> </ul>
SB-TW180-2.4		<ul style="list-style-type: none"> <li>• Twin spoke bracket (2 fixtures)</li> <li>• 180° Arms</li> <li>• Bronze Finish</li> </ul>
SB-TW90-2.4-3		<ul style="list-style-type: none"> <li>• Twin spoke bracket (2 fixtures)</li> <li>• 90° Arms</li> <li>• Bronze Finish</li> </ul>

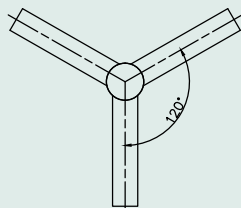
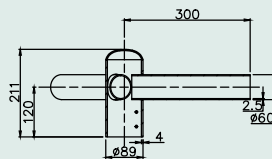
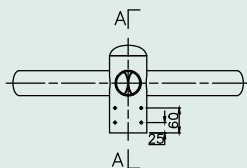
**Spoke Bracket**

Part No.

The Bracket is designed to mount over 2-3/8" (60mm) O.D. vertical tenon. Fixtures can be mounted to each spoke and adjusted horizontally.

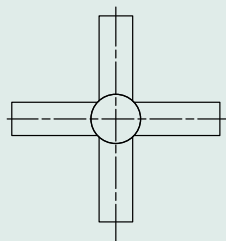
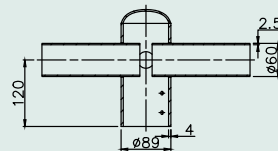
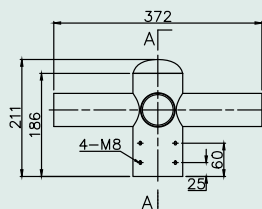
Description

SB-TR120-2.4-3



- Triple spoke bracket (3 fixtures)
- 120° Arms
- Bronze Finish

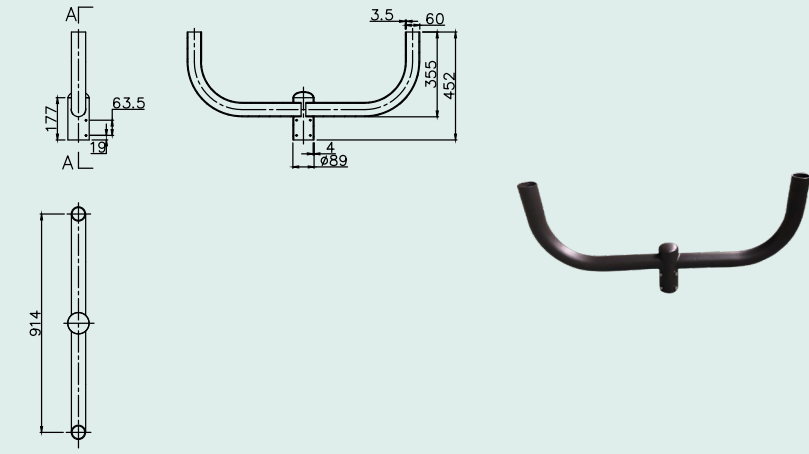
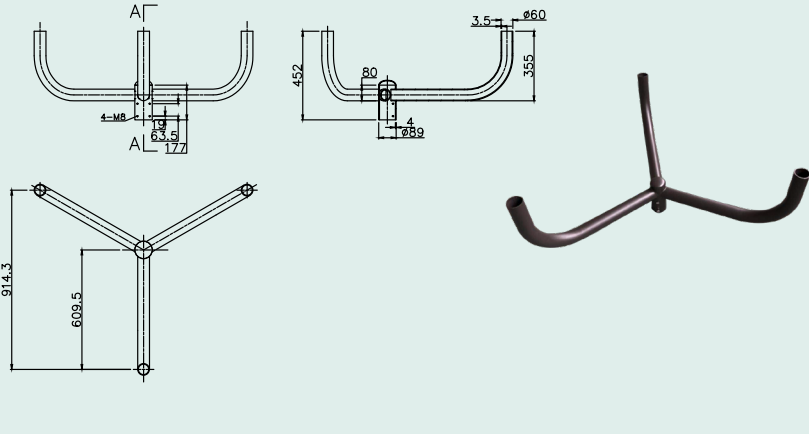
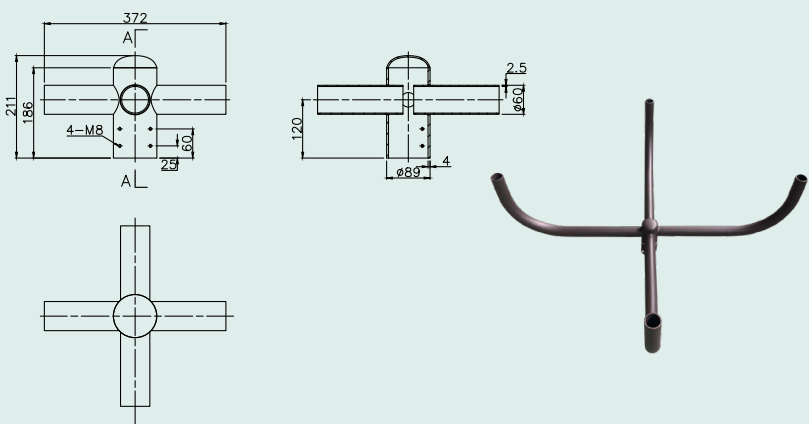
SB-QD-2.4-3



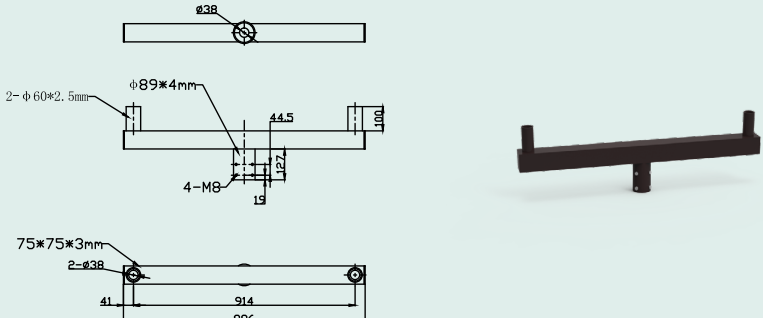
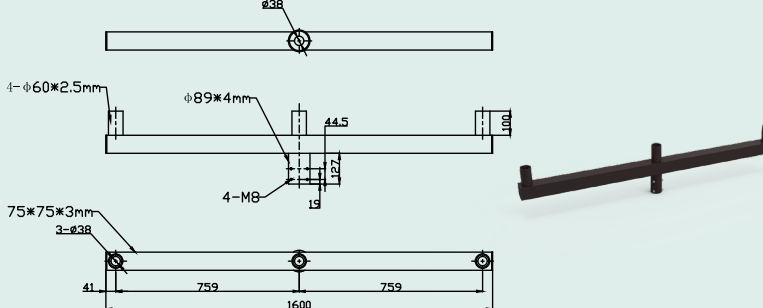
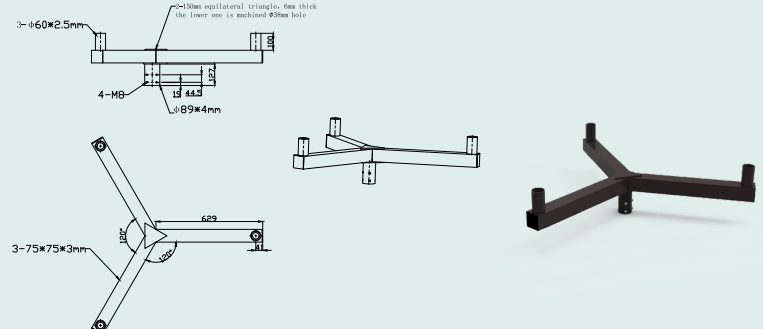
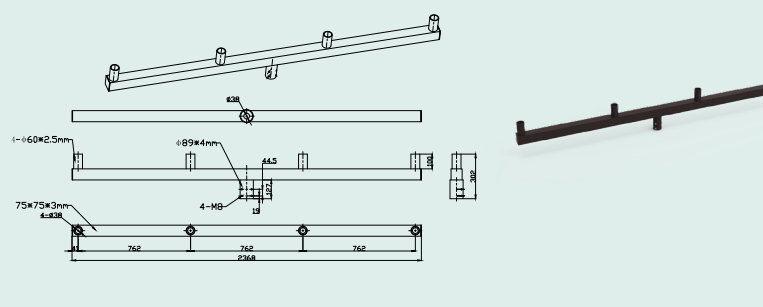
- Quad spoke bracket (4 fixtures)
- 90° Arms
- Bronze Finish



**Bullhorn**

Part No.	<p>This bullhorn bracket is designed to mount atop wood, steel, and concrete poles. This adapter allows for vertical mounting of two floodlight fixtures with two 2-3/8" slipfitters.</p>	Description
BH-TW-2.4-3		<ul style="list-style-type: none"> <li>• Bullhorn twin bracket (2 fixtures)</li> <li>• Bronze Finish</li> </ul>
BH-TR-2.4-3		<ul style="list-style-type: none"> <li>• Bullhorn triple bracket (3 fixtures)</li> <li>• Bronze Finish</li> </ul>
BH-QD-2.4-3		<ul style="list-style-type: none"> <li>• Bullhorn quad bracket (4 fixtures)</li> <li>• Bronze Finish</li> </ul>

**Tenon Bracket**

Part No.	<p>This vertical tenon bracket is an architectural design, and may mount atop wood, steel, and concrete poles. This adapter allows for vertical mounting of two fixtures with 2-3/8" slipfitters.</p>	Description
VT-TW180-2.4-3		<ul style="list-style-type: none"> <li>• Verticle tenon twin bracket (2 fixtures)</li> <li>• Bronze Finish</li> </ul>
VT-TR180-2.4-3		<ul style="list-style-type: none"> <li>• Verticle tenon triple bracket (3 fixtures)</li> <li>• 1 middle fixture</li> <li>• Bronze Finish</li> </ul>
VT-TR360-2.4-3		<ul style="list-style-type: none"> <li>• Verticle tenon triple bracket (3 fixtures)</li> <li>• Bronze Finish</li> </ul>
VT-QD180-2.4-3		<ul style="list-style-type: none"> <li>• Verticle tenon quad bracket (4 fixtures)</li> <li>• 2 middle fixtures</li> <li>• Bronze Finish</li> </ul>